

1



2



3

Presenters

Michael Householder
Presidential Spouse, Macalester College

Carole Campbell Williams
Presidential Spouse, Mount St. Joseph University

Chair: Sharon Frandsen
Presidential Spouse, Wittenberg University

Outside the Ivory Tower: Community Engagement

January 5, 2023

Michael Householder, Presidential Spouse
Macalester College
(Suzanne M. Rivera, President)



4

Macalester College - Quick Facts

- 2,175 students (Fall 2022)
- Students from 50 U.S. states and 94 countries
- 13% international students
- In Saint Paul, Minnesota (Minneapolis-Saint Paul metropolitan area ~3 million)



5

Macalester's Distinctive Features

- Signature **liberal arts** curriculum
- **Residential** campus experience
- Unique **location** in vibrant Twin Cities
- Emphasis on **citizenship within the wider world**

from the 2022-2030 Strategic Plan



6

Macalester's Location



7

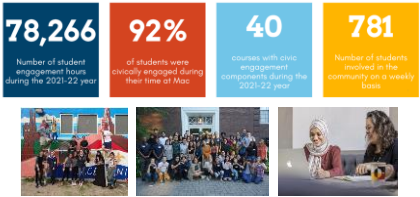
Community Engagement @ Mac

- Community Engagement Center
- Community-Based Learning
- Contributing Expertise and Research
- Being a Good Neighbor
- Expanding Access for Local Students
- President/Spouse Leadership



8

Community Engagement Center



9



10

Community Partnerships



11

Community-Based Learning



12

Contributing Expertise & Research

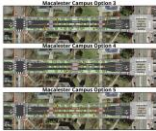


13

Being a Good Neighbor



Supporting neighborhood businesses and street beautification

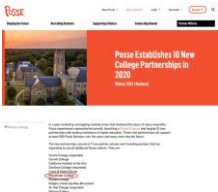


Collaborating with City of Saint Paul to improve safety and traffic flow



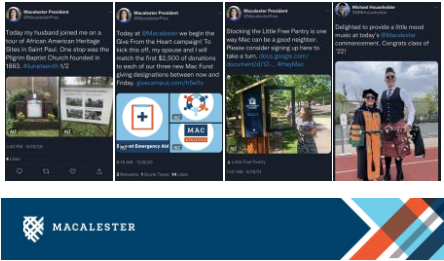
14

Expanding Access for Local Students



15

President/Spouse Leadership



16



17

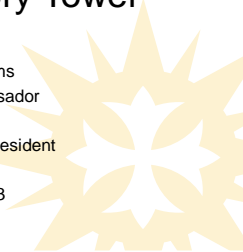
MOUNT ST. JOSEPH UNIVERSITY

Outside the Ivory Tower

Carole C. Williams
First Lady & Ambassador

H. James Williams, President

January 5, 2023



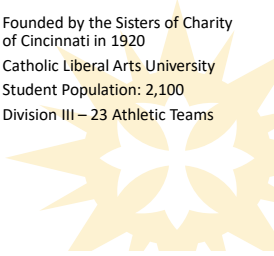
18

MOUNT ST. JOSEPH UNIVERSITY

The Community On Campus



- Founded by the Sisters of Charity of Cincinnati in 1920
- Catholic Liberal Arts University
- Student Population: 2,100
- Division III – 23 Athletic Teams



19

MOUNT ST. JOSEPH UNIVERSITY



Off Campus

- Cincinnati Metro Area
- Population: 2.26 million
- Major Performing Arts
- Major Cultural Sites
- Professional Sport Teams



20

MOUNT ST. JOSEPH UNIVERSITY

The Mount's Placement in the region

Placement in the region affects my relationships in the region.

- What is the Mount's relationship in the region?
- Does the Mount want to change its relationship, its impact in the community?
- Can I integrate into the local and wider community?



21

MOUNT ST. JOSEPH UNIVERSITY

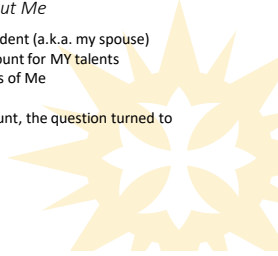
My Role at the Mount

It's all about Me

- My first discussion was with the President (a.k.a. my spouse)
- Was there a specific need at the Mount for MY talents
- Did the Board have specific requests of Me

After examining the needs of the Mount, the question turned to
 "What do I want to do?"

- At the Mount
- In the Community
- For Myself

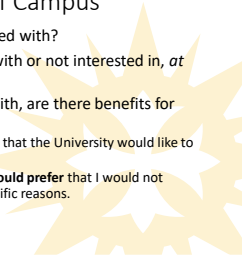


22

MOUNT ST. JOSEPH UNIVERSITY

The Community Off Campus

- What organizations do I want to be affiliated with?
- Are there organizations that I don't align with or not interested in, *at this time?*
- Of the organizations that I want to work with, are there benefits for the Mount with my affiliation with them?
 - Are there current organizational relationships that the University would like to maintain?
 - Are there organizations that the University **would prefer** that I would not work with at this particular time for very specific reasons.



23

MOUNT ST. JOSEPH UNIVERSITY

Off Campus Involvement

- Volunteer and or join Organizations of interest
 - Historical preservation, and work with organizations
 - Habitat for Humanity of Greater Cincinnati
 - Girl Scouts of Western Ohio
 - National Underground Railroad Freedom Center
 - Social Organizations
- Market your skills
 - I am CPA, I wanted to keep those skills intact. I looked for financial opportunities with nonprofits.
- Seek collaborations with new organizations and the university



24

MOUNT ST. JOSEPH UNIVERSITY

On Campus Activities

- Attend sporting, theater, musical events
- Host Meet & Greets
- Host Luncheons, Dinner, Gatherings for MSJ's F/S/S/A/BM/SC
- Work with F/S on projects of mutual interest
 - Christmas Tree Lighting
 - Etiquette Luncheon
 - Career Closet*

25

MOUNT ST. JOSEPH UNIVERSITY

Word of the Wise

- **Don't make any commitments for the 1st year.**
- **Don't Get Overboard!**



26



QUESTIONS?

27



Presenters

Michael Householder
Presidential Spouse, Macalester College

Carole Campbell Williams
Presidential Spouse, Mount St. Joseph University

Chair: Sharon Frandsen
Presidential Spouse, Wittenberg University

28



29