

The Digital Harrisburg Initiative & The Center for Public Humanities Fellows Program

Learn more:

www.digitalharrisburg.com

www.messiah.edu/info/21617/fellows_program

Google earth



Periodic Table of the Elements

Harrisburg: The City Revisited

Project: Harrisburg

Project: Harrisburg

Project: Harrisburg

Project: Harrisburg

Project: Harrisburg

Project: Harrisburg

Project: Harrisburg

Project: Harrisburg

Project: Harrisburg

Project: Harrisburg

Project: Harrisburg

Project: Harrisburg

Project: Harrisburg

Project: Harrisburg

Project: Harrisburg

Project: Harrisburg

Project: Harrisburg

Project: Harrisburg

Project: Harrisburg

Project: Harrisburg

Project: Harrisburg

Project: Harrisburg

Project: Harrisburg

Project: Harrisburg

Project: Harrisburg

Project: Harrisburg

Project: Harrisburg

Project: Harrisburg

Project: Harrisburg

Project: Harrisburg

Project: Harrisburg

Project: Harrisburg

Project: Harrisburg

Project: Harrisburg

Project: Harrisburg

Project: Harrisburg

Project: Harrisburg

Project: Harrisburg

Project: Harrisburg

Project: Harrisburg

Project: Harrisburg

Project: Harrisburg

Project: Harrisburg

Project: Harrisburg

Project: Harrisburg

Project: Harrisburg

Project: Harrisburg

Project: Harrisburg

Project: Harrisburg

Project: Harrisburg

Project: Harrisburg





... have an idea for the algorithm
... can the split have done the same thing?
... a full because LEAF FALL DOWN.
... on hand, it's the missing - right, it's the same thing?
... right, he's the same thing - right, it's the same thing?
... right, he's the same thing - right, it's the same thing?






[Home](#)
[Browse Exhibits](#)
[About](#)
[Process Statement](#)
[References](#)

Featured Collection


MARY SACHS CLOTHING



This looks at the clothing choices Mary Sachs made for her store.

Featured Exhibit

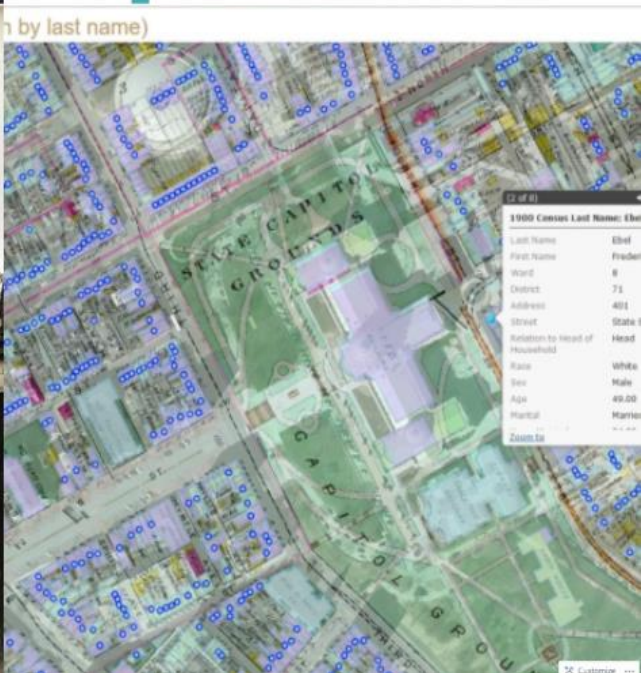
RETHINKING CITY BEAUTIFUL WITH MARY SACHS

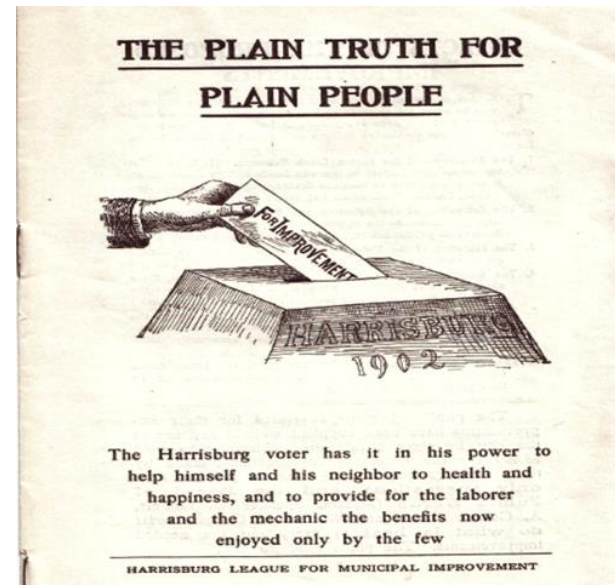
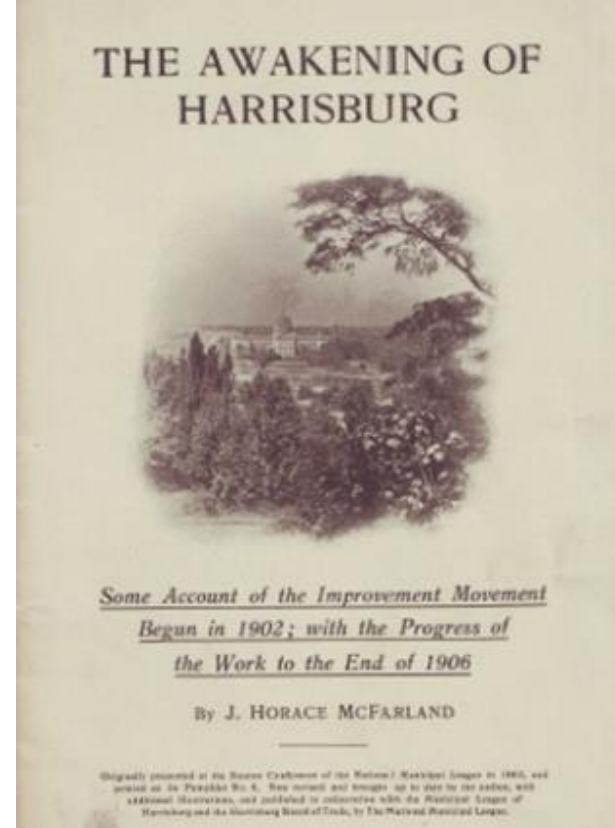


William Wilson, a historian, analyzed the City Beautiful Movement in Harrisburg and how the movement changed the city...

Recently Added Items

CAPITOL GROUNDS 1900



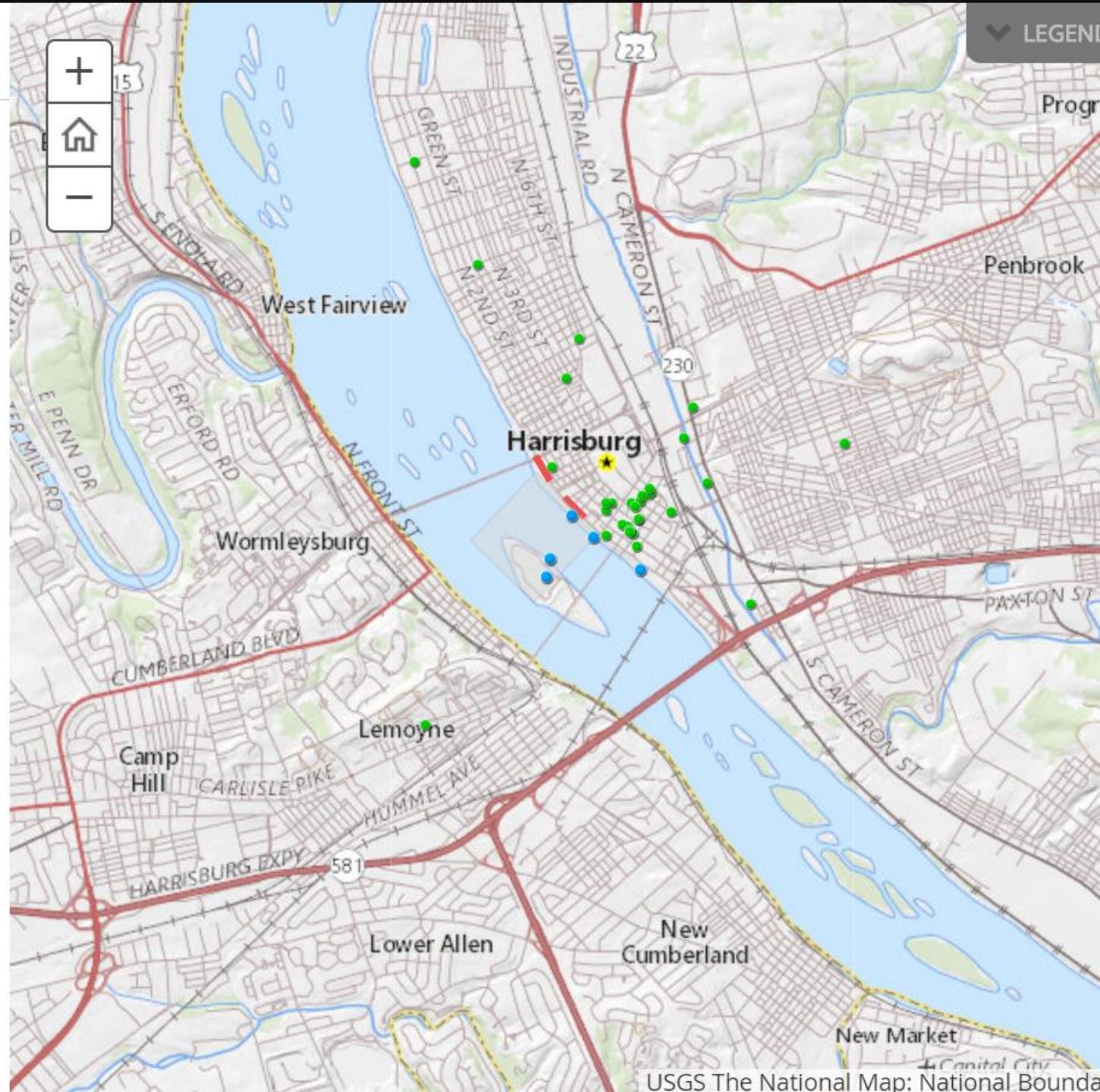


- Thousands of digital objects: photographs, documents, newspaper articles harvested by students from newspaper databases, PA State Archives, and Historical Society of Dauphin County

A story map



Harrisburg Kipona Festival 1936 Revival





THERE WERE GIANTS

TWELFTH CENSUS OF THE UNITED STATES.

125^A

SCHEDULE No. 1.—POPULATION.

Supervisor's District No. 9 Sheet No. 1
 Enumeration District No. 42

State Pennsylvania
 County Dauphin

Township or other division of county Harrisburg City
 (Insert name of township, town, precinct, district, or other division, as the case may be. See instructions.)

Name of Institution, _____

Name of incorporated city, town, or village, within the above-named division, _____

Ward of city, 1st / 20 Precinct

Enumerated by me on the 1st day of June, 1900, Isaiah Parson, Enumerator.

1209 20

LOCATION.				NAME of each person whose place of abode on June 1, 1900, was in this family. Enter surname first, then the given name and middle initial, if any. Exclude every person living on June 1, 1900, other children born since June 1, 1900.	RELATION. Relationship of each person to the head of the family.	PERSONAL DESCRIPTION.							NATIVITY.			CITIZENSHIP.			OCCUPATION, TRADE, OR PROFESSION of each person TEN YEARS of age and over.	EDUCATION.				OWNERSHIP OF HOME.																																																																																																																																																																																																																																																																																																																																																																																																																																																																																																																																																																																																																																																																																																																																																																																																																																																																																																																																																																																																																																																																														
STREET.	HOUSE NUMBER.	NUMBER OF DWELLING-HOUSE, IN THE NAME OF TENANT.	NUMBER OF FAMILY, IN THE NAME OF HEAD OF HOUSEHOLD.			RELATIONSHIP OF EACH PERSON TO THE HEAD OF THE FAMILY.	COLOR OR RACE.	SEX.	DATE OF BIRTH.		AGE AT LAST BIRTHDAY.	WHETHER SINGLE, MARRIED, WIDOWED, OR DIVORCED.	NUMBER OF YEARS MARRIED.	NUMBER OF LIVE MANY CHILDREN.	NUMBER OF THEM CHILDREN LIVING.	PLACE OF BIRTH OF THIS PERSON.	PLACE OF BIRTH OF FATHER OF THIS PERSON.	PLACE OF BIRTH OF MOTHER OF THIS PERSON.		YEAR OF IMMIGRATION TO THE UNITED STATES.	NUMBER OF YEARS IN THE UNITED STATES.	NATURALIZED.	MONTHS NOT EMPLOYED.	ATTENDED SCHOOL IN MONTHS.	CAN READ.	CAN WRITE.	CAN SPEAK ENGLISH.	OWNED OR RENTED.	OWNED FREE OR MORTGAGED.	FARM OR HOUSE.	NUMBER OF FARM SCHEDULE.																																																																																																																																																																																																																																																																																																																																																																																																																																																																																																																																																																																																																																																																																																																																																																																																																																																																																																																																																																																																																																																																							
									MONTH.	YEAR.																						PLACE OF BIRTH OF THIS PERSON.	PLACE OF BIRTH OF FATHER OF THIS PERSON.	PLACE OF BIRTH OF MOTHER OF THIS PERSON.																																																																																																																																																																																																																																																																																																																																																																																																																																																																																																																																																																																																																																																																																																																																																																																																																																																																																																																																																																																																																																																																				
1	2	3	4	5	6	7	8	9	10	11	12	13	14	15	16	17	18	19	20	21	22	23	24	25	26	27	28																																																																																																																																																																																																																																																																																																																																																																																																																																																																																																																																																																																																																																																																																																																																																																																																																																																																																																																																																																																																																																																																											
North Street	1084	1	1	Davis William ² ₁	head	W	M	Mar	1843	57	M	30			Pennsylvania	Pennsylvania	Pennsylvania																																																																																																																																																																																																																																																																																																																																																																																																																																																																																																																																																																																																																																																																																																																																																																																																																																																																																																																																																																																																																																																																																					</

>>

1900Final

<

>

>

>

>

>

>

>

>

>

>

>

>

>

>

>

>

>

>

>

>

>

>

>

>

>

>

>

>

>

>

>

>

>

>

>

>

>

>

>

>

>

>

>

>

>

>

>

>

>

>

>

>

>

>

>

>

>

>

>

>

>

>

>

>

>

>

>

>

>

>

>

>

>

>

>

>

>

>

>

>

>

>

>

>

>

>

>

>

>

>

>

>

>

>

>

>

>

>

>

>

>

>

>

>

>

>

>

>

>

>

>

>

>

>

>

>

>

>

>

>

>

>

>

>

>

>

>

>

>

>

>

>

>

>

>

>

>

>

>

>

>

>

>

>

>

>

>

>

>

>

>

>

>

>

>

>

>

>

>

>

>

>

>

>

>

>

>

>

>

>

>

>

>

>

>

>

>

>

>

>

>

>

>

>

>

>

>

>

>

>

>

>

>

>

>

>

>

>

>

>

>

>

>

>

>

>

>

>

>

>

>

>

>

>

>

>

>

>

>

>

>

>

>

>

>

>

>

>

>

>

>

>

>

>

>

>

>

>

>

>

>

>

>

>

>

>

>

>

>

>

>

>

>

>

>

>

>

>

>

>

>

>

>

>

>

>

>

>

>

>

>

>

>

>

>

>

>

>

>

>

>

>

>

>

>

>

>

>

>

>

>

>

>

>

>

>

>

>

>

>

>

>

>

>

>

>

>

>

>

>

>

>

>

>

>

>

>

>

>

>

>

>

>

>

>

>

>

>

>

>

>

>

>

>

>

>

>

>

>

>

>

>

>

>

>

>

>

>

>

>

>

>

>

>

>

>

>

>

>

>

>

>

>

>

>

>

>

>

>

>

>

>

>

>

>

>

>

>

>

>

>

>

>

>

>

>

>

>

>

>

>

>

>

>

>

>

>

>

>

>

>

>

>

>

>

>

>

>

>

>

>

>

>

>

>

>

>

>

>

>

>

>

>

>

>

>

>

>

>

>

>

>

>

>

>

>

>

>

>

>

>

>

>

>

>

>

>

>

>

>

>

>

>

>

>

>

>

>

>

>

>

>

>

>

>

>

>

>

>

>

>

>

>

>

>

>

>

>

>

>

>

>

>

>

>

>

>

>

>

>

>

>

>

>

>

>

>

>

>

>

>

>

>

>

>

>

>

>

>

>

>

>

>

>

>

>

>

>

>

>

>

>

>

>

>

>

>

>

>

>

>

>

>

>

>

>

>

>

>

>

>

>

>

>

>

>

>

>

>

>

>

>

>

>

>

>

>

>

>

>

>

>

>

>

>

>

>

>

>

>

>

>

>

>

>

>

>

>

>

>

>

>

>

>

>

>

>

>

>

>

>

>

>

>

>

>

>

>

>

>

>

>

>

>

>

>

>

>

>

>

>

>

>

>

>

>

>

>

>

>

>

>

>

>

>

>

>

>

>

>

>

>

>

>

>

>

>

>

>

>

>

>

>

>

>

>

>

>

>

>

>

>

>

>

>

>

>

>

>

>

>

>

>

>

>

>

>

>

>

>

>

>

>

>

>

>

>

>

>

>

>

>

>

>

>

>

>

>

>

>

>

>

>

>

>

>

>

>

>

>

>

>

>

>

>

>

>

>

>

>

>

>

>

>

>

>

>

>

>

>

>

>

>

>

>

>

>

>

>

>

>

>

>

>

>

>

>

>

>

>

>

>

>

>

>

>

>

>

>

>

>

>

>

>

>

>

>

>

>

>

>

>

>

>

>

>

>

>

>

>

>

>

>

>

>

>

>

>

>

>

>

>

>

>

>

>

>

>

>

>

>

>

>

>

>

>

>

>

>

>

>

>

>

>

>

>

>

>

>

>

>

>

>

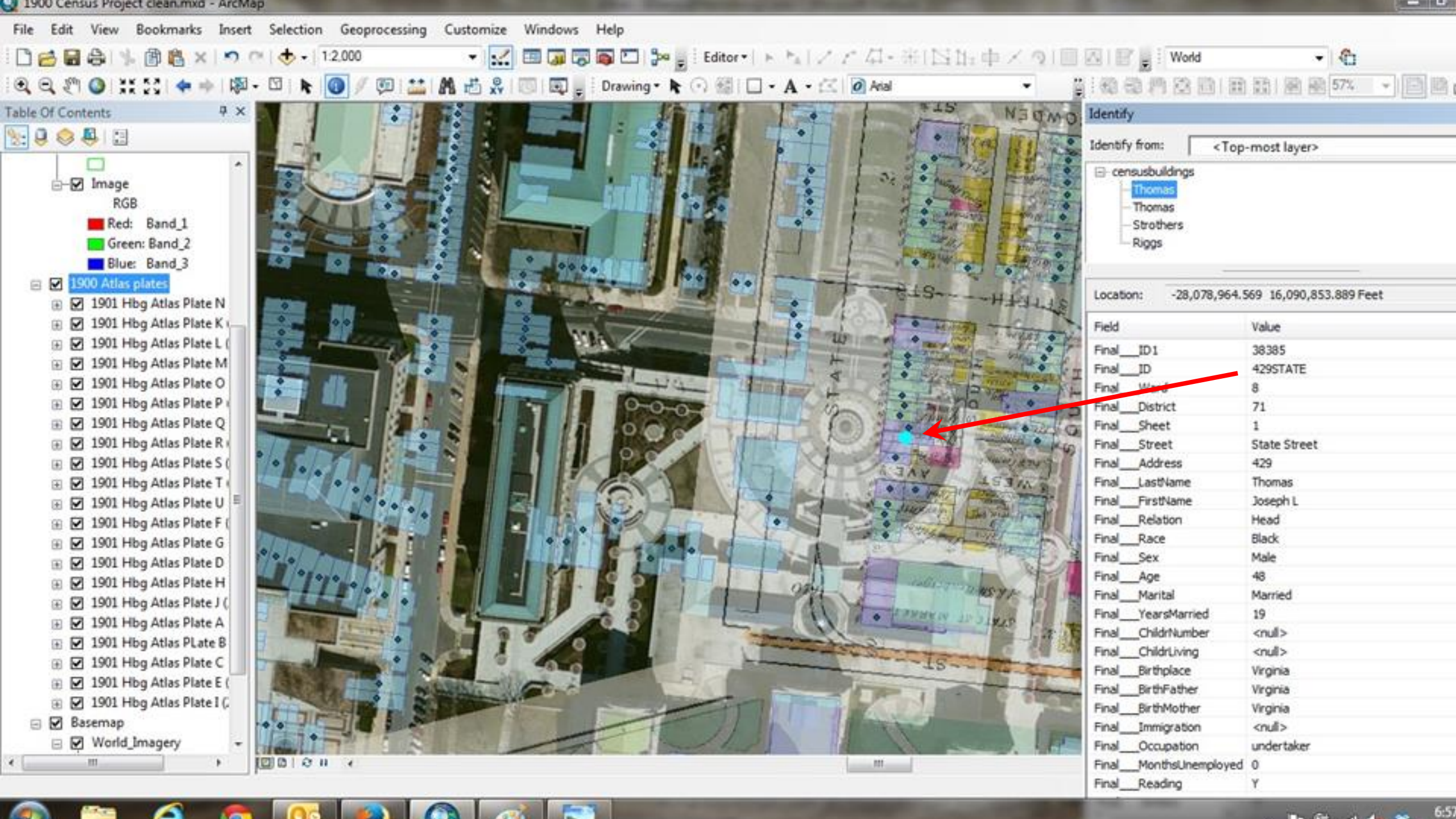
>

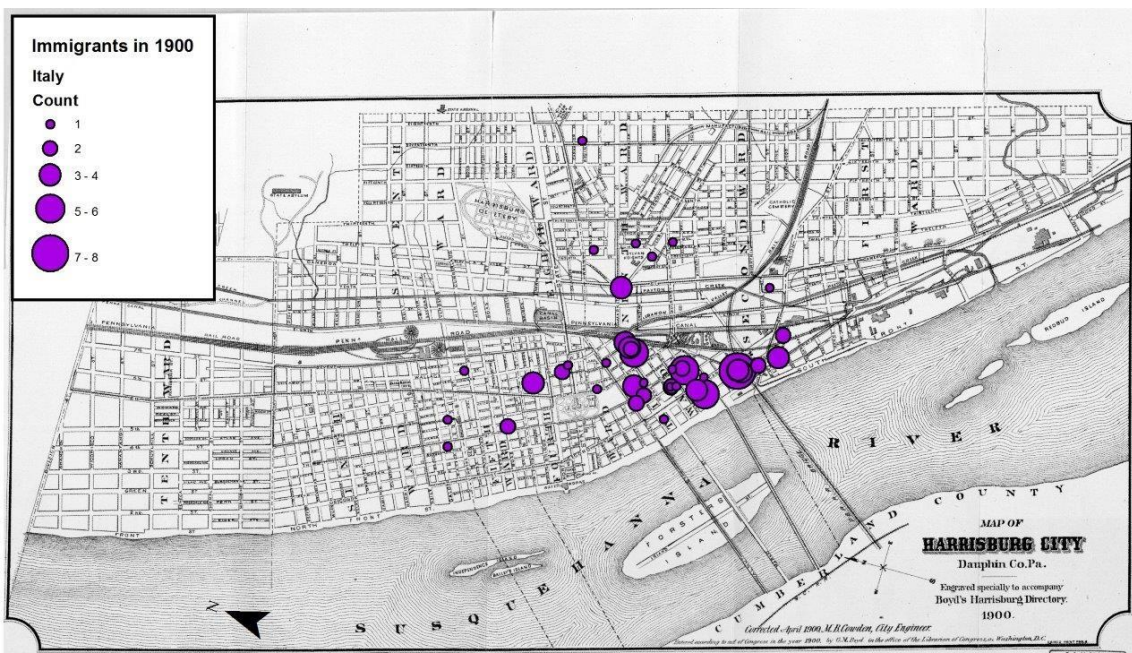
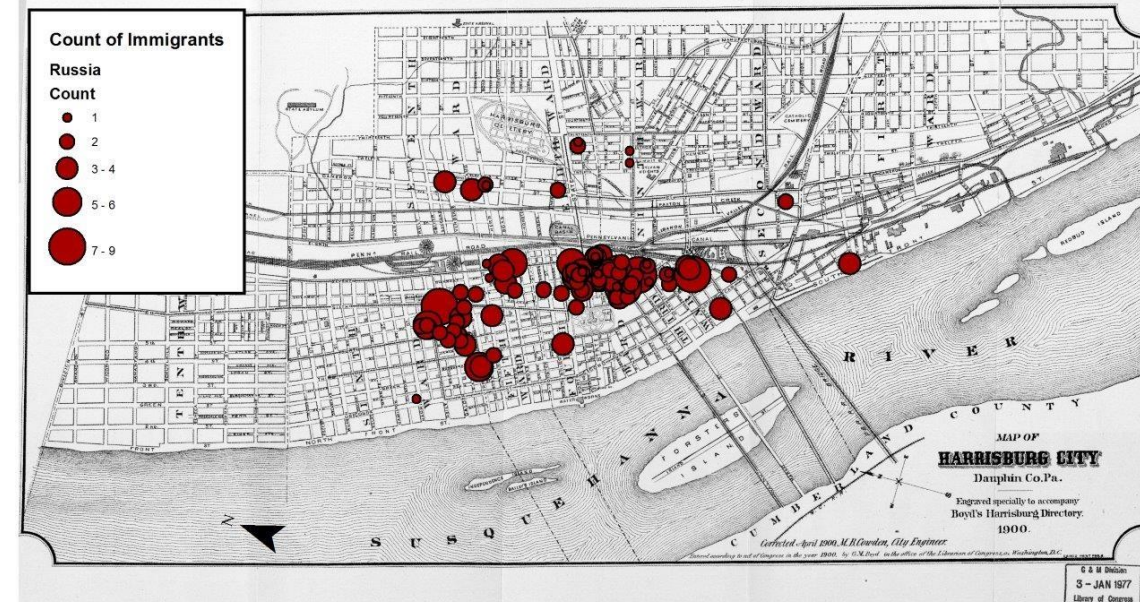
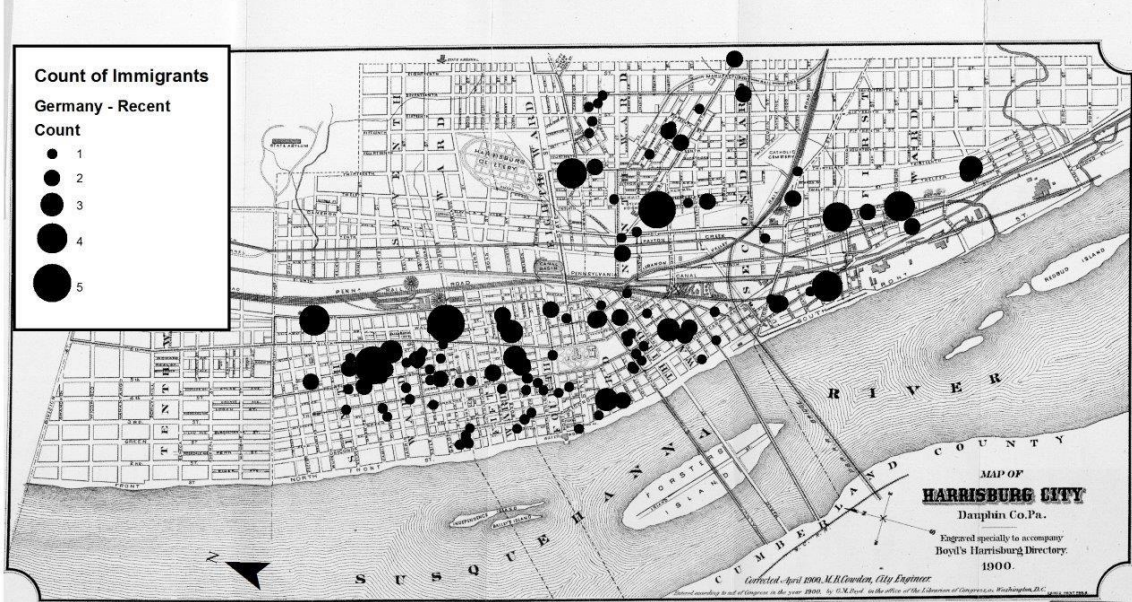
>

></



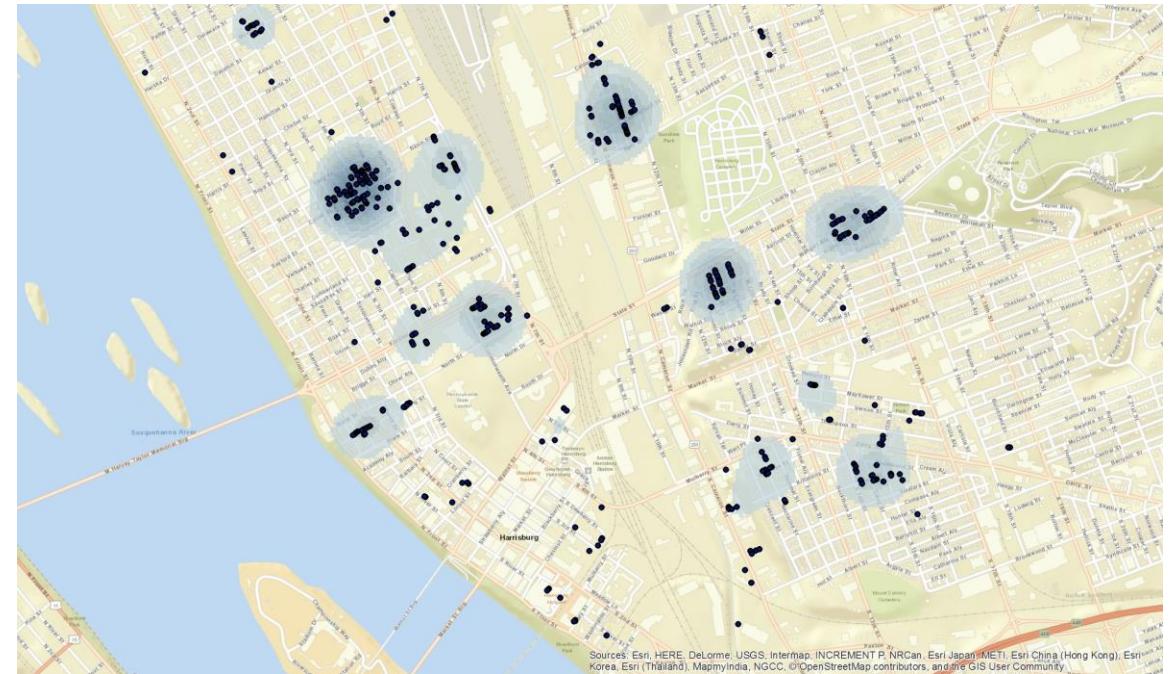
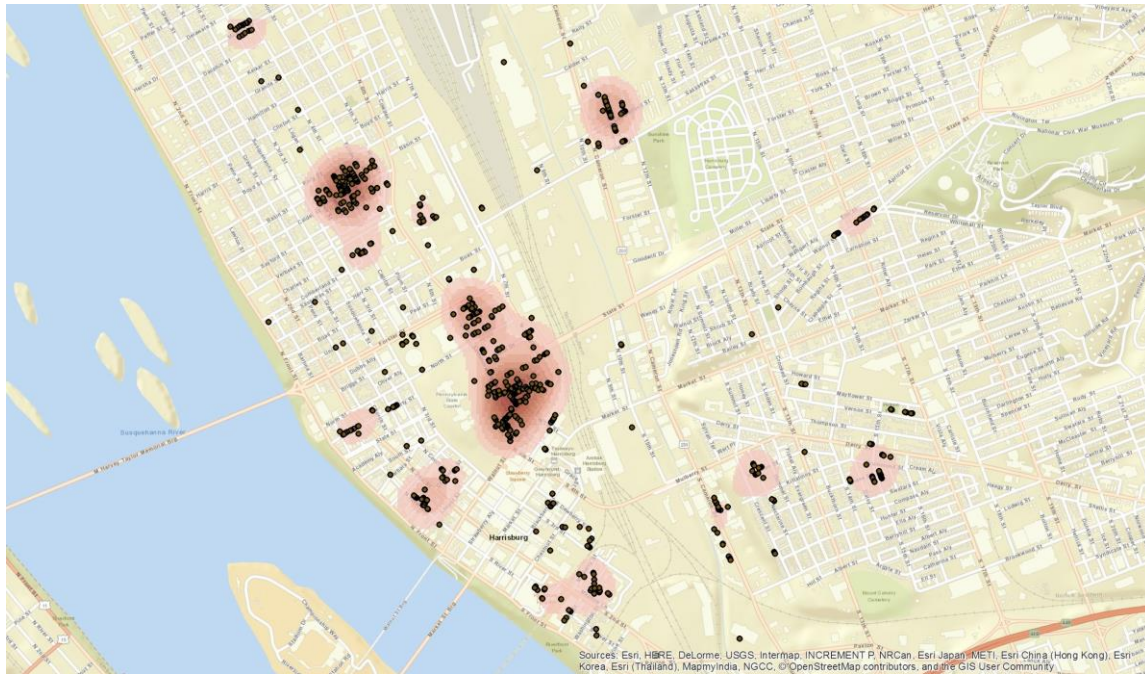
- 1901 Atlas = 12,000 homes, 50,000 individuals
- 1929 Atlas = 17,000 homes, 80,00 individuals





Immigration in early
1900s

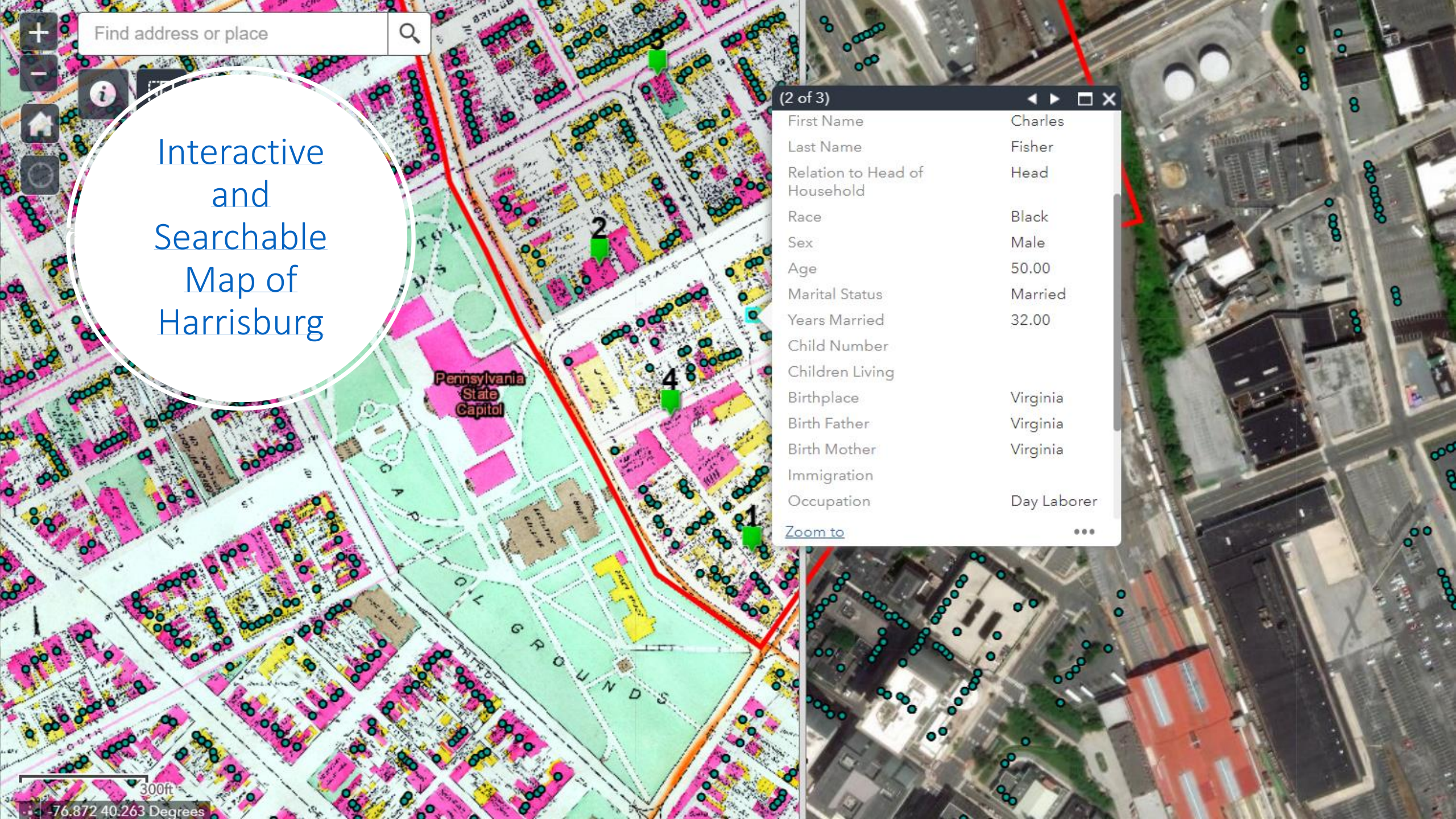
African-American Households 1900 and 1910

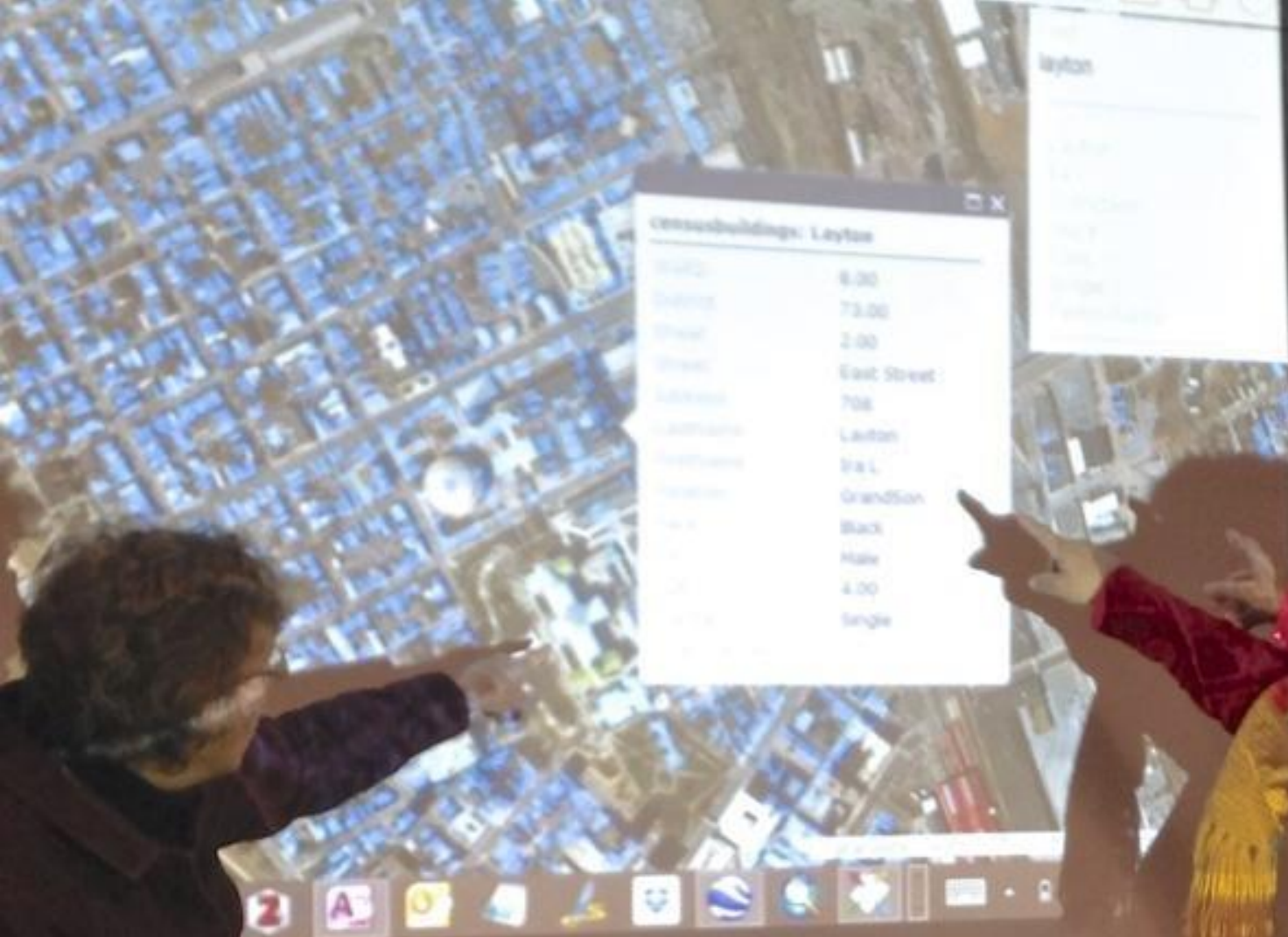


Interactive
and
Searchable
Map of
Harrisburg

(2 of 3)

First Name	Charles
Last Name	Fisher
Relation to Head of Household	Head
Race	Black
Sex	Male
Age	50.00
Marital Status	Married
Years Married	32.00
Child Number	
Children Living	
Birthplace	Virginia
Birth Father	Virginia
Birth Mother	Virginia
Immigration	
Occupation	Day Laborer
Zoom to	...





HUMANITIES FELLOWS

[Home](#) / [Campus Directory](#) / [Offices](#) / [Center for Public Humanities](#) / [Fellows Program](#)

CENTER FOR PUBLIC HUMANITIES

[About](#)

[Contact Us](#)

[Programs](#)

[Fellows Program](#)

[Meet the Fellows](#)

[Fellows Projects](#)

[Hoverter Course for the Humanities](#)

[Humanities Symposium](#)

[Teachers as Scholars](#)

[Public Lectures](#)

[Give](#)



Energize Scholarship, Effect Change

Each year, Student Fellows connect classroom learning with community involvement through partnership with the Center for Public Humanities. The program encourages Fellows to deepen scholarship by reflecting on public humanities, discussing issues that extend beyond the classroom and collaborating on projects with the [School of Humanities](#) and community partners.

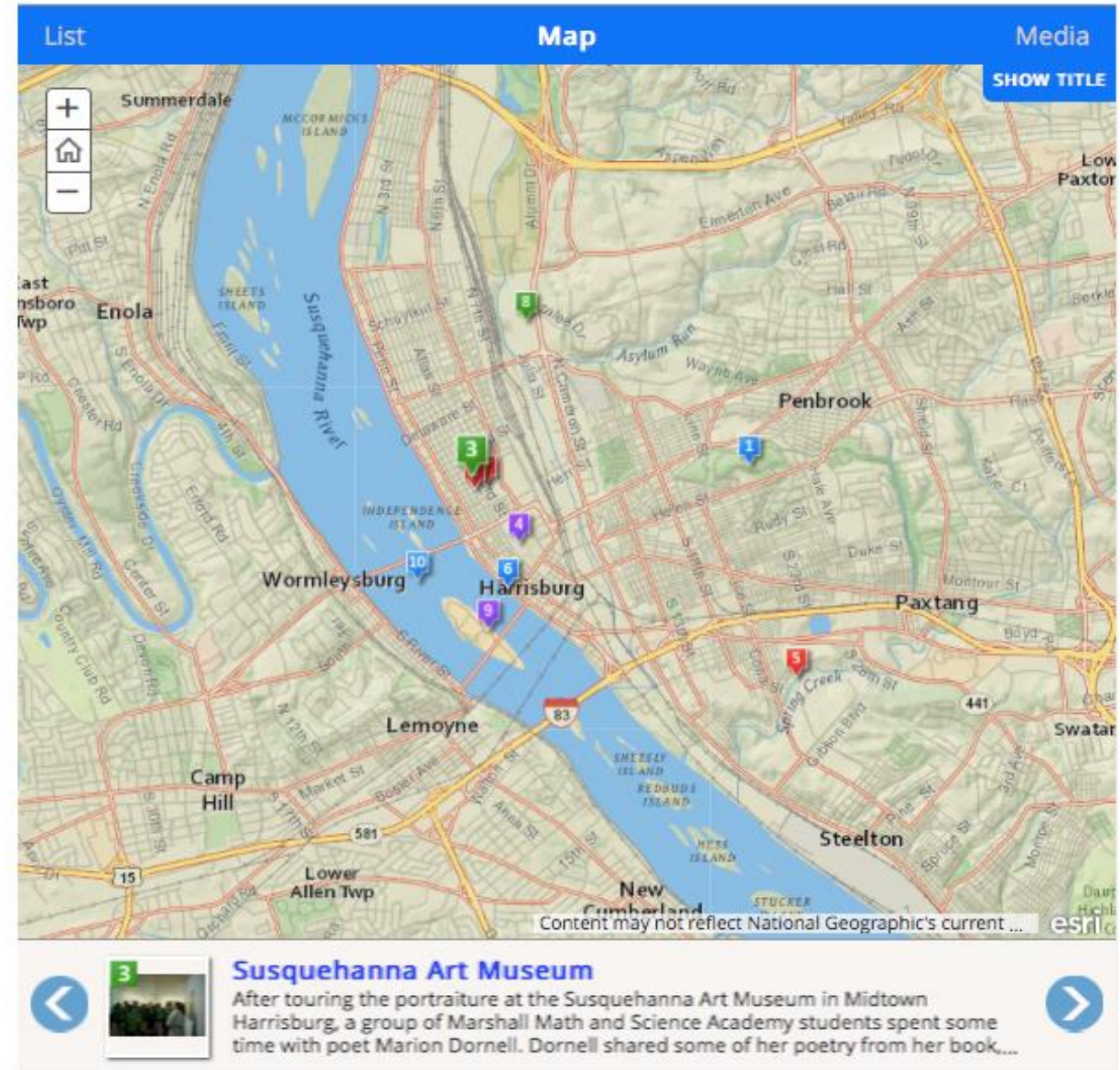
POETRY IN PLACE

messiah.edu/
poetryinplace

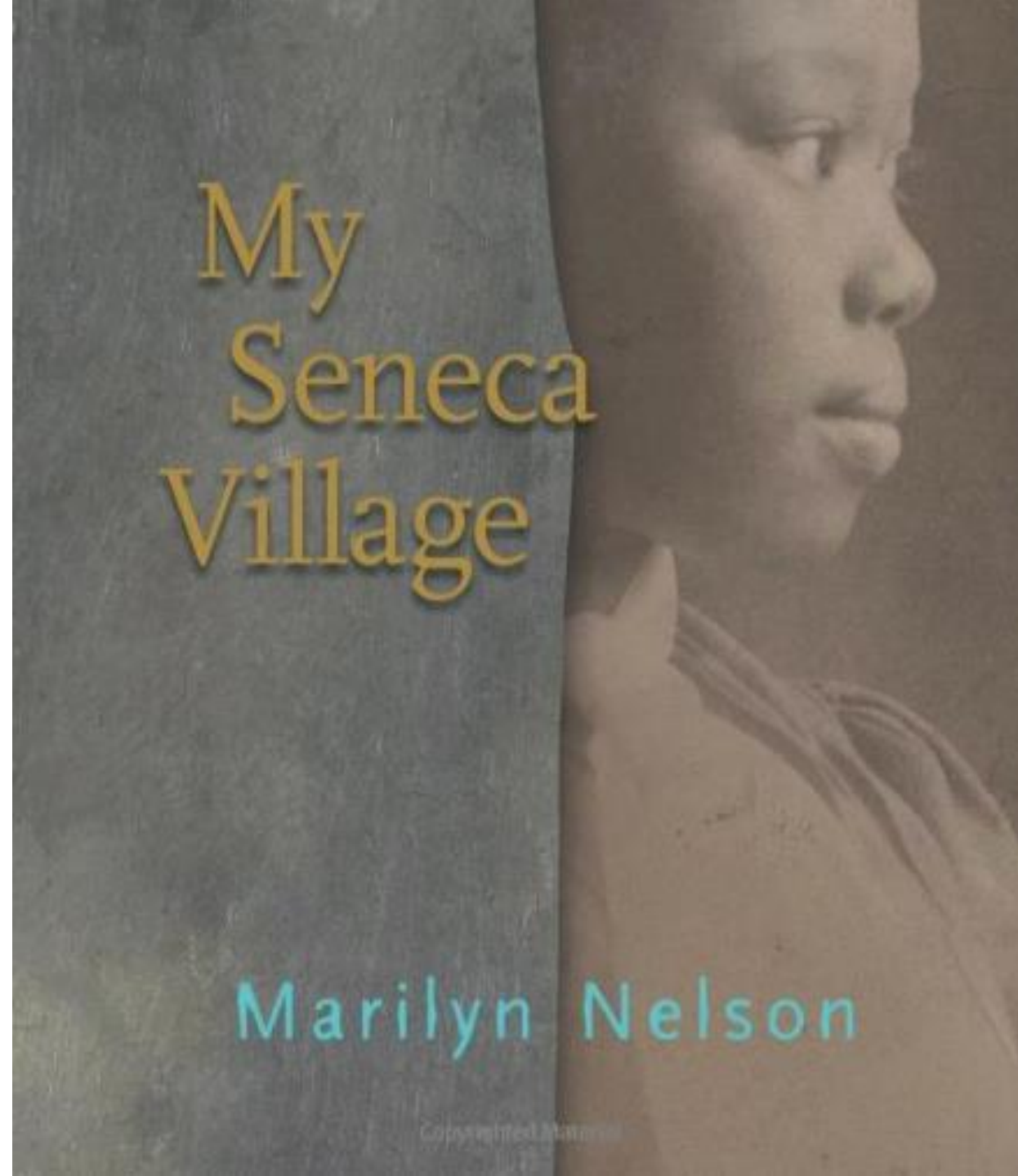
Poetry in Place cultivates connections to the rich cultural, historical and ecological roots of Harrisburg through field trips to significant places in and around the city. Field trips are followed by poetry workshops with guest poets which invite youth to bring their own perspectives and experiences of the city through poetry.

Explore the Interactive Poetry in Place Map Below!

(Click the Workshop titles in the map to explore student's poems)



The image shows a screenshot of an interactive map titled "Poetry in Place" for Harrisburg, PA. The map is displayed in a web browser interface with a blue header bar containing "List", "Map", and "Media" tabs. The "Map" tab is active, showing a satellite view of the city. Several numbered markers (1-10) are placed on the map, indicating locations of poetry workshops. A sidebar on the left contains a "List" tab and a "Media" tab. Below the map, there is a section titled "Susquehanna Art Museum" with a small thumbnail image and a description: "After touring the portraiture at the Susquehanna Art Museum in Midtown Harrisburg, a group of Marshall Math and Science Academy students spent some time with poet Marion Dornell. Dornell shared some of her poetry from her book..."



PEOPLE OF THE EIGHTH WARD

NAME: HANNAH JONES

ADDRESS: 134 TANNERS ALLEY

GENDER: FEMALE

AGE IN 1910: 55

RACE: "MULATTO"
(MIXED-RACE)

OCCUPATION: MUSIC

BIRTHPLACE: VIRGINIA

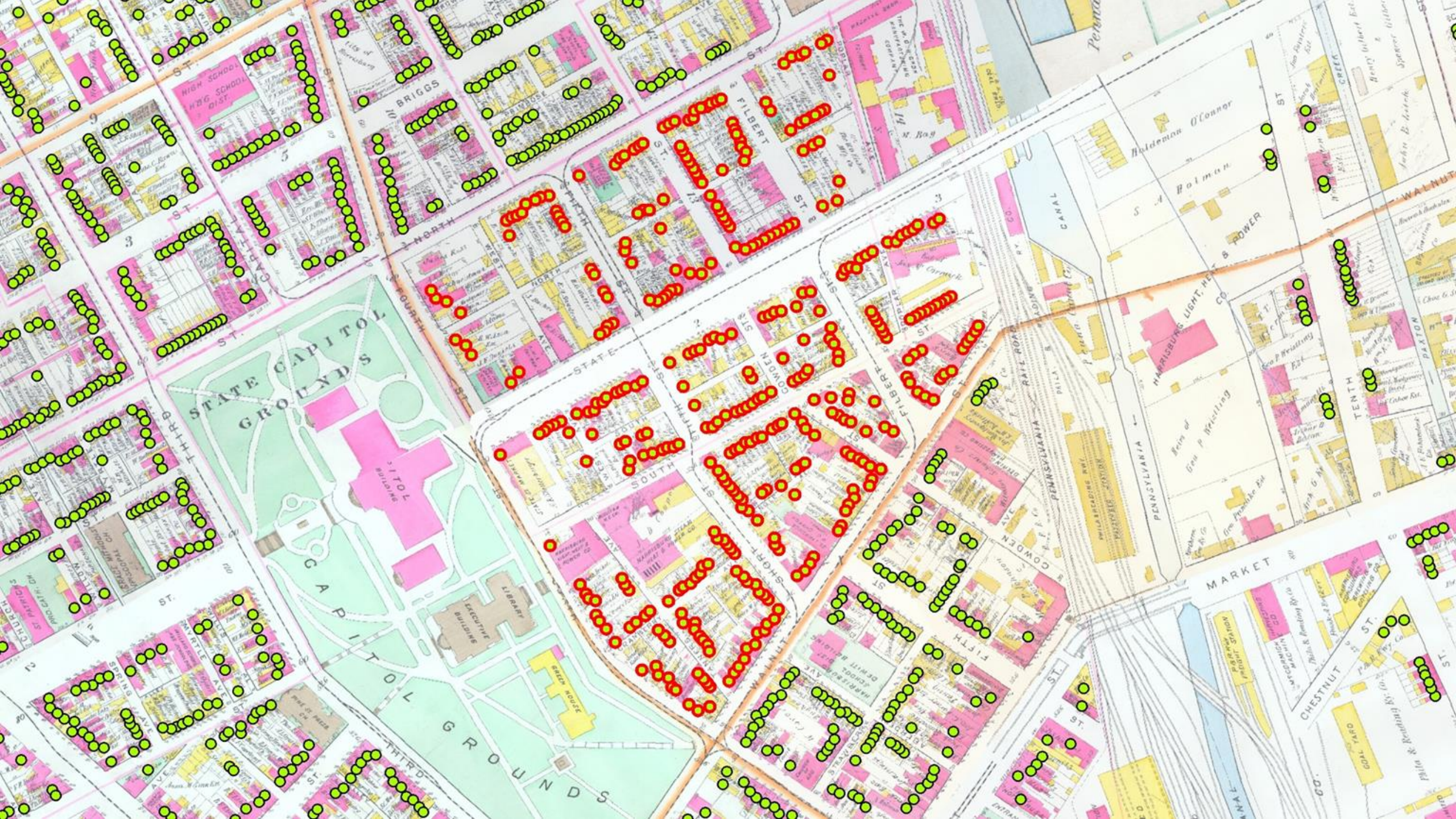
CAN THEY READ?: YES

HOW MANY PEOPLE DO THEY LIVE WITH?: 6

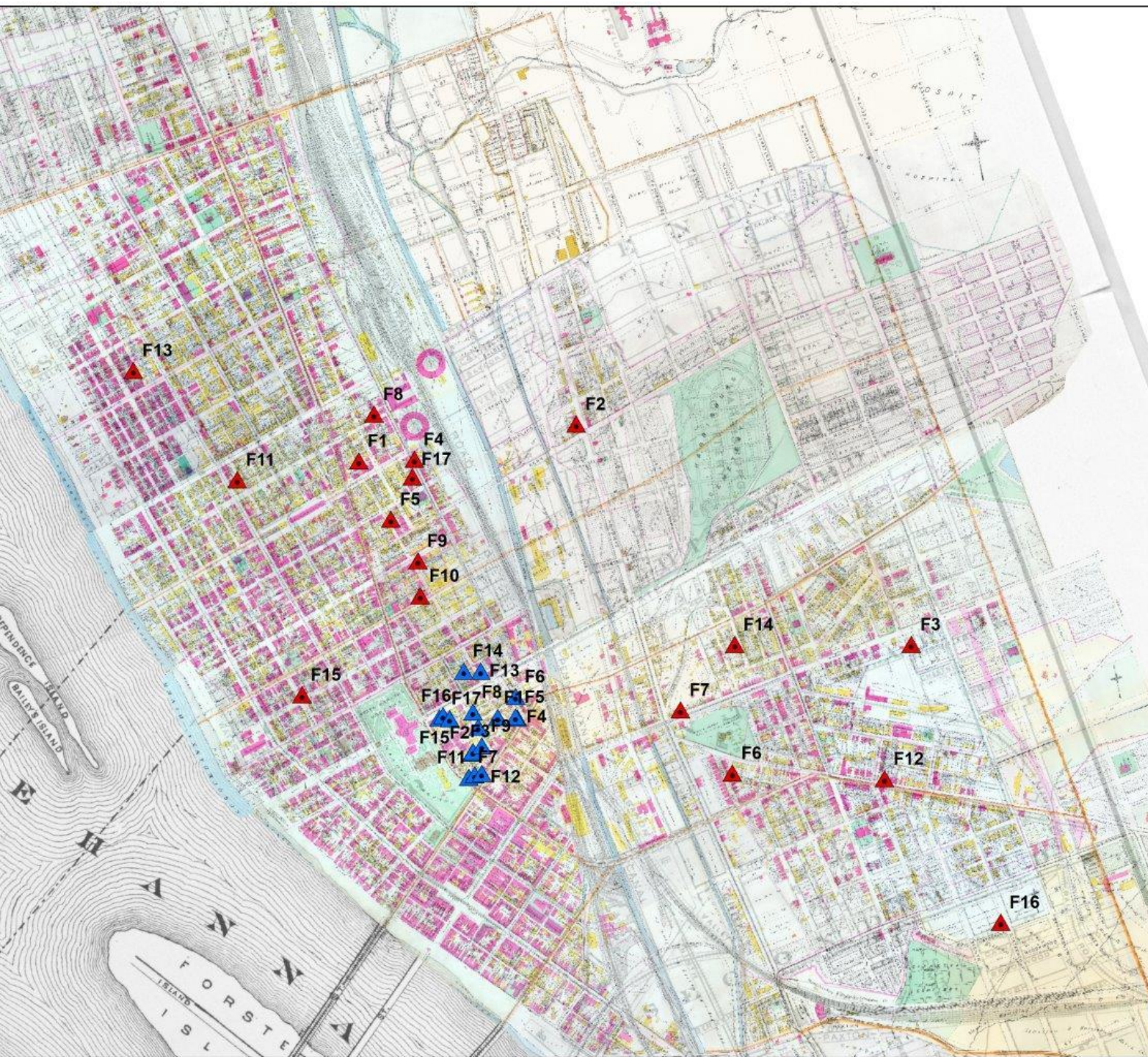
CLASSIFIED











The displacement of families of the Old Eighth Ward



Old Eighth Ward
@OldEighth

Home

Posts

Reviews



Like Follow Share ...

DO YOU KNOW ME?

We are seeking descendants of...

Name: W. Justin Carter

Addresses: 49 14th Street

Sex: Male

Year of Birth: 1866

Occupations: Lawyer

Birthplace: Virginia

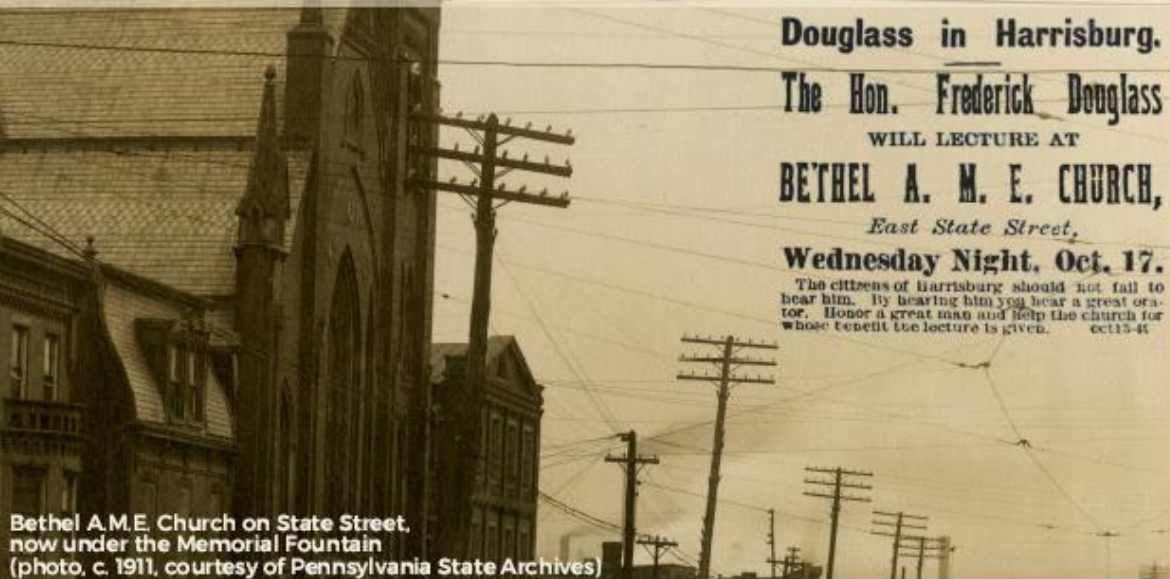
Spouse: Elizabeth Carter

Children: Harlam, and W. Justin Jr. Carter

+ Add a Button

Look Up, Look Out

STORIES FROM THE OLD EIGHTH WARD



Douglass in Harrisburg.
The Hon. Frederick Douglass
WILL LECTURE AT
BETHEL A. M. E. CHURCH,
East State Street,
Wednesday Night, Oct. 17.
The citizens of Harrisburg should not fail to hear him. By hearing him you hear a great orator. Honor a great man and help the church for whose benefit the lecture is given. oct13-41

Bethel A.M.E. Church on State Street,
now under the Memorial Fountain
(photo, c. 1911, courtesy of Pennsylvania State Archives)

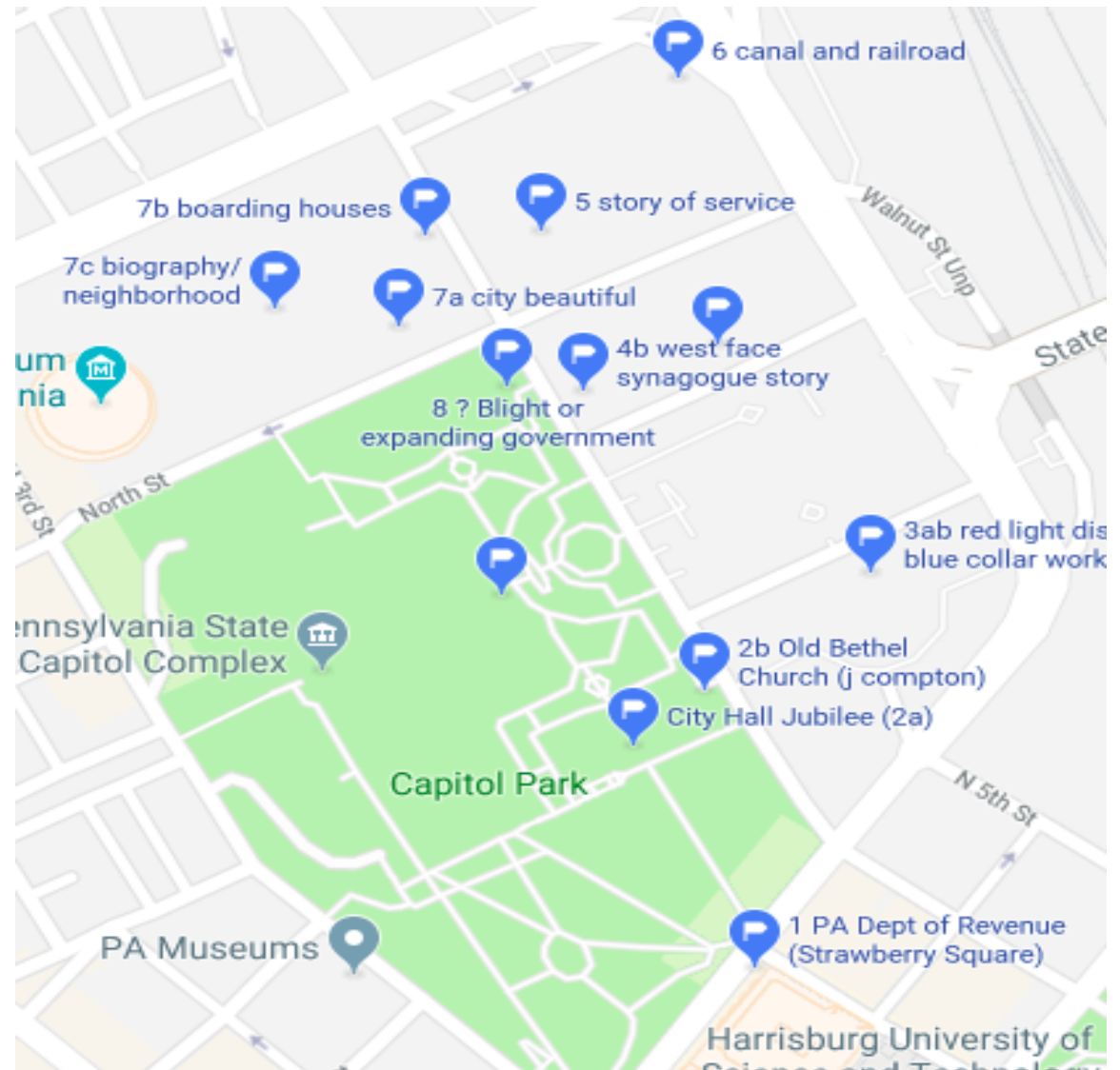
GREAT SPEAKERS OF THE OLD EIGHTH WARD

"We are all bound up together in one great bundle of humanity, and society cannot trample on the weakest and feeblest of its members without receiving the curse in its own soul."

—Frances Harper,
Eleventh National Women's
Rights Convention, May
1866 in New York City



Frances Harper
Poet, abolitionist, &
women's rights advocate



digitalharrisburg.com/lookuplookout2



Music is My Life, by Wesley Pena

Music is my life.

Shoo shoo do din do din din shoo shoo pop
Here in my neighborhood I hear jazz music all
over the place.

Music is my life.

I love going to 2nd Baptist Church (the church
Daddy and I founded) and hearing the choir
sing
those beautiful songs that play in my head all
day
Amazing grace how sweet the sound.

Music is my life.

I love opera, just this year, Marian Anderson
came to our town
And we all crowded into the Board of Trade
Auditorium to hear her!
*Deep river, My home is over Jordan. Deep
river, Lord.*
I want to cross over into campground.

Music is my life.

