



THE COUNCIL OF
INDEPENDENT COLLEGES

NETVUE CHAPLAINCY CONFERENCE

*Strengthening Campus Chaplaincy:
New Models of Leadership and Practice*

Chicago, Illinois ♦ March 28–29, 2014



*The Council of Independent Colleges gratefully
acknowledges the generous support of this
conference by Lilly Endowment Inc.*



NetVUE Chaplaincy Conference

Conference Welcome

Welcome to the March 2014 Chaplaincy Conference of the Network for Vocation in Undergraduate Education (NetVUE). The purpose of this conference, and the similar one that will be held in September, is to consider new models of leadership and practice for college chaplaincy that also strengthen vocational exploration by students and faculty members. The conference will address organizational structure, areas of assigned responsibility, career patterns of chaplains, relations with denominational bodies, and the religious dimensions of the institution's mission. In addition, the conference provides an opportunity to strengthen partnerships among campus chaplains, college presidents, and other campus leaders. The increased religious diversity on many campuses stimulates institutions and their chaplains to develop new educational programs as well as new religious and spiritual practices. Because no single model of the chaplaincy fits all institutions, the conference will address issues from multiple perspectives and consider fresh approaches that have the potential for greater effectiveness.

The Chaplaincy Conferences are an initiative by NetVUE to strengthen the campus chaplaincy. NetVUE is a nationwide network of colleges and universities for the intellectual and theological exploration of vocation among undergraduate students. This initiative is administered by the Council of Independent Colleges (CIC) with generous support from Lilly Endowment Inc. and membership dues.

Since CIC launched NetVUE in fall 2009, more than 170 colleges and universities have joined the network. These institutions span a wide spectrum, but they are united by a commitment to address the intellectual and theological exploration of vocation in the classroom, in student life, and in service to the community. NetVUE seeks to enrich the capacity of member institutions to guide the development of future leaders who are theologically literate, whose attitudes and behaviors are shaped by their values and commitments, and who are eager to sustain a life of service guided by a sense of calling.

We welcome your participation in the March 2014 NetVUE Chaplaincy Conference and over these two days look forward to learning from one another and to sharing ideas for strengthening campus chaplaincy and the exploration of vocation for many years to come.



Schedule-at-a-Glance

FRIDAY

March 28, 2014

7:00–8:30 a.m.

Conference Registration

South Reception Foyer

7:00–8:30 a.m.

Breakfast

Q Tower Dining

8:45–10:15 a.m.

Opening Plenary Session:

Panel of Presidents

Why the Chaplaincy Matters
to Institutional Mission and
Strategic Goals

Fox River Ballroom 1

10:15–10:45 a.m.

Refreshment Break

North Reception Foyer

10:45 a.m.–12:15 p.m.

Poster Session:

**Networking to Strengthen
the Chaplaincy**

Fox River Ballrooms 2–3

12:30–1:30 p.m.

Lunch by Campus Role

Q Tower Dining

1:45–3:00 p.m.

Plenary Session:

**Perry L. Glanzer and
Jonathan P. Hill**

Forming Faith: How the
Religious and Spiritual Lives
of Students Are Shaped in
College

Fox River Ballroom 1

3:00–3:30 p.m.

Refreshment Break

North Reception Foyer

3:30–5:00 p.m.

Concurrent Workshops:

**Resources for Strengthening
the Chaplaincy**

Effective Campus Practices for
Faith Formation

E L403/405

Guidelines for Presidents
about the Chaplaincy

E L404/406

Interfaith and Intercultural
Challenges for Chaplains

E L407/409

The Evolving Role of College
and University Chaplaincy

E L408/410

5:15–5:45 p.m.

Reception

Fox River Ballrooms 2–3

5:45–6:45 p.m.

Dinner

Q Tower Dining

7:00–8:00 p.m.

Plenary Session:

L. Gregory Jones

Discerning Hope: Charting
New Relationships in a Time
of Disruptive Innovation

Fox River Ballroom 1

8:15–8:45 p.m.

Evening Prayer

E L403/405

SATURDAY

March 29, 2014

7:00–8:15 a.m.

Breakfast with Campus Teams

Q Tower Dining

8:30–9:30 a.m.

Concurrent Campus Presentations: Effective Chaplaincy Practices

Student Faith Development:
The Chaplain's Role

E L403/405

Campus Religious Diversity:
Ecumenical and Interfaith I

E L404/406

Engaging Religious Partners
beyond the Campus

E L407/409

The Campus Mission Officer
and the Chaplain: Structures
and Roles

E L408/410

9:30–9:45 a.m.

Break

North Reception Foyer

9:45–10:45 a.m.

Concurrent Campus Presentations: Effective Chaplaincy Practices

Student Development:
The Partnership between
Chaplaincy and Academic
Affairs

E L403/405

Campus Religious Diversity:
Ecumenical and Interfaith II

E L404/406

Engaging Founding Religious
Bodies and Current
Stakeholders

E L407/409

Assessing the Outcomes of
Campus Chaplaincy

E L408/410

10:45–11:00 a.m.

Break

North Reception Foyer

11:00 a.m.–Noon

Closing Plenary Session: Bobby Fong

The Chaplaincy, Vocational
Exploration, and Institutional
Mission and Identity

Fox River Ballroom 1

Noon

Boxed Lunches and Departures

South Reception Foyer

Noon–3:00 p.m.

NetVUE Advisory Council Meeting

E L411/413



Friday, March 28

7:00–8:30 a.m.
South Reception Foyer

CONFERENCE REGISTRATION

7:00–8:30 a.m.
Q Tower Dining

BREAKFAST

8:45–10:15 a.m.
Fox River Ballroom 1

OPENING PLENARY SESSION: PANEL OF PRESIDENTS

Why the Chaplaincy Matters to Institutional Mission and Strategic Goals

What is the relationship between institutional mission and effective chaplaincy strategies? Three college presidents will address their institutions' understandings of the chaplaincy in relation to institutional mission, culture, structures, and connections to various religious organizations. Each will consider how chaplains support religious and spiritual formation and vocational exploration by students, faculty members, and staff. The panelists also will discuss the role of the chaplaincy in campus-wide planning, resource decisions, and communication with core institutional stakeholders.



Steven C. Bahls is president of Augustana College (IL). From 1994 to 2003, he was dean of the law school at Capital University in Ohio. He also served as associate dean and professor of law at the University of Montana and as an attorney for the law firm of Frisch, Dudek, and Slattery, Ltd. in Wisconsin. Bahls is a member of the CIC Board of Directors.



Donna M. Carroll has been president of Dominican University (IL) since 1994, when she was appointed as the first lay president in the university's history. Prior to her appointment at Dominican, Carroll served as the university secretary of Fordham University. Before that, she was the senior vice president, dean of the college, and dean of students at Mount Vernon College in Washington, DC. Carroll is a member of the NetVUE Advisory Council.



Rock Jones has served as president of Ohio Wesleyan University since 2008. Formerly, he was executive vice president and dean of advancement at Hendrix College in Arkansas where he also served as vice president for enrollment and dean of admission and financial aid, interim vice president for student affairs, and chaplain.

Chair: **Jay K. Simmons**, President, Simpson College (IA)

10:15–10:45 a.m.
North Reception Foyer

REFRESHMENT BREAK

10:45 a.m.–12:15 p.m.
Fox River Ballrooms 2–3

POSTER SESSION: NETWORKING TO STRENGTHEN THE CHAPLAINCY

Each participating team will present poster materials that illustrate a strategic effort to strengthen the chaplaincy and identify areas for which advice from other NetVUE members would be helpful. Campus teams will be invited to ask questions, provide observations, and recommend resources to assist the presenting teams in achieving their goals.

12:30–1:30 p.m.
Q Tower Dining

LUNCH BY CAMPUS ROLE

Conference participants are asked to sit at tables designated by campus role for conversation with colleagues in similar positions.

1:45–3:00 p.m.

Fox River Ballroom 1

PLENARY SESSION**Forming Faith: How the Religious and Spiritual Lives of Students Are Shaped in College**

Based on their current research, which spans a variety of college and university settings, Perry L. Glanzer and Jonathan P. Hill will discuss the undergraduate search for purpose and meaning. Drawing on their analysis of surveys and focused interviews of students, they will describe how such a quest is shaped by students' religious and spiritual backgrounds as well as the varied campus experiences in which students participate.



Perry L. Glanzer is professor of educational foundations at Baylor University and a resident scholar in the Institute of Church-State Studies and in the Institute for the Study of Religion. His teaching and scholarship explore the formation of religious faith and moral character in higher education as well as the nature of faith-based higher education in the United States and around the globe. Since joining Baylor in 2002, Glanzer has taught courses in the history of American education, the nature of faith-based higher education, and the social and moral foundations of education. He is co-author of *The Idea of the Christian University* (2013) and *Christianity and Moral Identity in Higher Education* (2009). Glanzer has published more than 50 journal articles and book chapters on topics in religion, education, and moral education.



Jonathan P. Hill is assistant professor of sociology at Calvin College. His teaching and scholarship are concerned with the relationship of religious pluralism to higher education institutional contexts, the nature of faith in a social-networked world, and the impact of religion in educational and community settings. His doctoral work at the University of Notre Dame focused on religious pathways in the transition to adulthood. Hill joined the Calvin faculty in 2009 and in 2013 received Calvin's Faculty Lectureship Award. He is co-author of a forthcoming book, *Young Catholic America: Emerging Adults In, Out of, and Gone from the Church*.

Chair: **Joseph J. Cicala**, Vice President for University Life and Dean of Students, Alvernia University

3:00–3:30 p.m.
North Reception Foyer

REFRESHMENT BREAK

3:30–5:00 p.m.

CONCURRENT WORKSHOPS: RESOURCES FOR STRENGTHENING THE CHAPLAINCY

E L403/405

Effective Campus Practices for Faith Formation

Many students yearn to live in ways that are life-giving to others, attentive to the presence of God, and good for an endangered planet. What campus practices intentionally encourage these priorities? This session will explore the chaplain's capacity to teach students about living together for the good of all.

Quincy D. Brown, Vice President for Spiritual Life and Church Relations, LaGrange College

Eldon Fry, College Pastor, Messiah College

Chair: **Melissa Nyeholt**, Director, Center for Faith and Practice, Geneva College

E L404/406

Guidelines for Presidents about the Chaplaincy

Oversight of campus chaplaincy often requires critical judgments about how to deploy campus ministry leadership for maximum benefit to the campus community. A new presidential handbook for campus chaplaincy will be presented and discussed. Based on research gathered through the National Study of Campus Ministries, this resource provides guidelines for presidents and other senior administrators to use as they carry out new initiatives to strengthen the campus chaplaincy.

Betty A. DeBerg, Retired Professor of Religion, University of Northern Iowa, and Director, National Study of Campus Ministries

Chair: **Michael P. Mihalyo, Jr.**, President, Davis & Elkins College

E L407/409

Interfaith and Intercultural Challenges for Chaplains

As campuses become more diverse in religious and cultural backgrounds, new opportunities for religious life are emerging. Interfaith engagement takes different forms on campuses where adherents of religious traditions interact with students who identify themselves as “spiritual but not religious” or who check “none” as their religious affiliation. Students of different nationalities and cultural experiences add to this diversity. A panel of experienced chaplains and leaders of religious life will discuss their own campus approaches to increased religious and cultural diversity.

Rita George-Tvrtković, Assistant Professor of Theology, Benedictine University (IL)

Brian T. Johnson, Executive Director of Campus Ministries, Valparaiso University

Tracy W. Sadd, Chaplain and Director of Religious Life, Elizabethtown College

Chair: **Theodore Parge**, Executive Vice President, Aurora University

E L408/410

The Evolving Role of College and University Chaplaincy

How has the role of independent colleges and universities in nurturing the religious and spiritual formation of students evolved in recent decades? What can be learned from recent research regarding ministry on campus? Participants will consider the history of strategies and structures for the chaplaincy and related campus ministries, including the work of chaplains who participated in Lilly Endowment's Programs for the Theological Exploration of Vocation.

John A. Schmalzbauer, Blanche Gorman Strong Chair in Protestant Studies, Missouri State University, and Consultant, National Study of Campus Ministries

Chair: **Erica L. Brown**, Chaplain, Blackburn College

5:15–5:45 p.m.
Fox River Ballrooms 2–3

RECEPTION

5:45–6:45 p.m.
Q Tower Dining

DINNER

7:00–8:00 p.m.
Fox River Ballroom 1

PLENARY SESSION

Discerning Hope: Charting New Relationships in a Time of Disruptive Innovation

The disruptive forces of technological innovation and economic constraint that recently have impacted American higher education are affecting the college chaplaincy as well. How can campus leaders cultivate innovative campus chaplaincy leadership while being mindful of both tradition and change? What role can campus chaplaincy play in helping college communities discern hope in the face of unprecedented change and uncertainty?



L. Gregory Jones is professor of theology at Duke Divinity School and senior strategist for education in Duke University's Innovation and Entrepreneurship Initiative. He also serves as the strategic director of the Laity Lodge Leadership Initiative. Previously, he was vice provost for global strategy and programs at Duke and earlier was dean of the Divinity School. Jones is the author, co-author, or editor of 16 books, including *Forgiving As We've Been Forgiven: Community Practices for Making Peace* (2010), *Resurrecting Excellence* (2006), *Everyday Matters: Intersections of Life and Faith* (2003), and *Embodying Forgiveness* (1995). Jones, an ordained United Methodist minister, has published more than 200 articles in various publications. He is an editor-at-large for *Christian Century* magazine and writes regularly for the web magazine *Faith & Leadership*.

Respondent: **Julie D. Massey**, Senior Director for Mission and Ministry, St. Norbert College

Chair: **David C. Crago**, Provost and Vice President for Academic Affairs, Ohio Northern University

8:15–8:45 p.m.

E L403/405

EVENING PRAYER

Conference participants are invited to take part in a time of prayer and reflection.

Leader: **Christopher Bowen**, Dean of the Chapel, Roanoke College





Saturday, March 29

7:00–8:15 a.m.

Q Tower Dining

BREAKFAST WITH CAMPUS TEAMS

Campus teams are invited over breakfast to discuss conference take-aways and begin to plan next steps to strengthen the chaplaincy on campus.

8:30–9:30 a.m.

E L403/405

CONCURRENT CAMPUS PRESENTATIONS: EFFECTIVE CHAPLAINCY PRACTICES

Student Faith Development: The Chaplain's Role

Whether students come to campus with a faith commitment or no particular faith, they frequently encounter a diverse array of religious traditions and expressions. Yet beyond achieving a better understanding of these traditions, many students seek guidance in making personal choices about religious faith as well as the practices, behaviors, and values associated with such faith. Chaplains typically have responsibility for guiding the faith formation of students. Presenters will discuss the faith-formation needs of students and approaches used by those charged with shepherding the spiritual formation of their students.

Brian A. Beckstrom, Campus Pastor, Wartburg College

Dennis M. Gallagher, AA, Interim Director of Campus Ministry and Vice President of Mission, Assumption College

Stephanie S. McCaffrey, Associate Director of Campus Ministry, Assumption College

Chair: **Kenneth W. Clapp**, Chaplain and Senior Vice President, Catawba College

E L404/406

Campus Religious Diversity: Ecumenical and Interfaith I

Many NetVUE colleges and universities are encountering greater religious diversity among their students. On some campuses, institutions that are historically rooted in a particular Christian theological tradition are becoming more ecumenically Christian in their orientation and vocational programming. On other campuses, students, faculty members, and staff from a variety of religious traditions, including Jewish, Muslim, and Hindu, seek to create interreligious communities of learning, conversation, and practice. How can the chaplaincy address the increasing religious diversity on campus?

Mark T. Kurowski, Director of University Ministry, Benedictine University (IL)

Paul Rohde, Campus Pastor, Augustana College (SD)

Chair: **Walter Wiltschek**, Campus Pastor, Manchester University

E L407/409

Engaging Religious Partners beyond the Campus

Campus chaplains frequently develop partnerships with off-campus religious organizations, including local congregations, para-church groups, and ministerial associations. What issues do chaplains need to address in order to develop effective working relationships with such groups? How do campus organizational structures and alignments assist, or impede, in establishing and sustaining such partnerships? Presenters will discuss varied models and strategies to address partnerships with off-campus religious organizations.

Roland Martinson, Board of Regents Member, Concordia College (MN), and retired Academic Dean, Luther Seminary (MN)

James R. Mohr III, College Chaplain and Director of Church Relations, Westminster College (PA)

Thomas P. Schlotterback, Director of Vocation and Church Leadership, Concordia College (MN)

Chair: **M. Carol Weddle**, Campus Pastor, Lindsey Wilson College

The Campus Mission Officer and the Chaplain: Structures and Roles

Many independent colleges and universities seek to uphold religious traditions and practices that are specific to their institutional missions. At some institutions the campus mission officer is expected to orient faculty members, staff, and students to the educational mission and religious heritage that guide institutional practices in and beyond the classroom. How can a mutually beneficial relationship develop between the campus mission officer and the campus chaplain, both of whom have concern for the institution's spiritual climate and educational mission?

Michael Galligan-Stierle, President, Association of Catholic Colleges and Universities

Robert L. Manuel, President, University of Indianapolis

Chair: **Jean Marie Cleveland, OSF**, Vice President for Mission Effectiveness, Marian University (IN)

9:30–9:45 a.m.

North Reception Foyer

BREAK

9:45–10:45 a.m.

CONCURRENT CAMPUS PRESENTATIONS: EFFECTIVE CHAPLAINCY PRACTICES

E L403/405

Student Development: The Partnership between Chaplaincy and Academic Affairs

Campus leaders share concerns about the spiritual, academic, and vocational development of their students. As potential mentors, faculty members often play significant roles in supporting the holistic development of their students. How might a partnership between the faculty and chaplaincy support student development and strengthen campus chaplaincy?

Robert E. Yoder, Campus Pastor and Assistant Professor of Youth Ministry, Goshen College

Chair: **Elizabeth Gabbard**, Chaplain, University of the Ozarks

E L404/406

Campus Religious Diversity: Ecumenical and Interfaith II

Many NetVUE colleges and universities are encountering greater religious diversity among their students. On some campuses, institutions that are historically rooted in a particular Christian theological tradition are becoming more ecumenically Christian in their orientations and vocational programming. On other campuses, colleges and universities with students, faculty members, and staff from a variety of religious traditions, including Jewish, Muslim, and Hindu, seek to create interreligious communities of learning, conversation, and practice. A second set of presenters will discuss how they are using their chaplaincy resources to address the increasing religious diversity on campus.

Sonja M. Hagander, College Pastor and Director of Ministries, Augsburg College

Stephen Intagliata, Campus Pastor, Bluffton University

Chair: **Sean Lansing**, Director of Mission Engagement, Cardinal Stritch University

E L407/409

Engaging Founding Religious Bodies and Current Stakeholders

College and university leaders have substantial engagement with religious organizations that can influence future directions of the institution. These organizations may include sponsoring religious bodies, founding societies, and current stakeholders such as trustees, alumni, and donors. How do presidents or other senior campus leaders think about relationships with historic and current religious partners as they seek to strengthen campus chaplaincy and foster vocational exploration?

Margaret Carney, OSF, President, St. Bonaventure University

Steven R. Timmermans, President, Trinity Christian College

Chair: **James C. Skedros**, Interim Dean of Holy Cross Greek Orthodox School of Theology, Hellenic College

Assessing the Outcomes of Campus Chaplaincy

Colleges and universities are increasingly asked to determine whether the institutional mission and strategic plan match actual learning and educational outcomes. How can the efforts of campus chaplaincy initiatives most appropriately be assessed? Presenters will discuss how they approach the evaluation of the chaplaincy on their campuses.

Jacquelyn C. Condon, Vice President for Student Life and Dean of Students, Monmouth College (IL)

John DeCostanza, Director of University Ministry, Dominican University (IL)

Mauri A. Ditzler, President, Monmouth College (IL)

Claire Noonan, Vice President for Mission and Ministry, Dominican University (IL)

Teri M. Ott, Chaplain, Monmouth College (IL)

Chair: **Richard M. Ashbrook**, Provost and Vice President for Academic and Student Affairs, Capital University



10:45–11:00 a.m.

North Reception Foyer

BREAK

11:00 a.m.–Noon

Fox River Ballroom 1

CLOSING PLENARY SESSION

The Chaplaincy, Vocational Exploration, and Institutional Mission and Identity

What role can campus chaplains play in nurturing institutional mission and identity and in fostering the intellectual and theological exploration of vocation by colleges and universities that value the liberal arts? How can campus chaplains address the process of vocational discernment by students, faculty, and staff? Presidential reflections on the positive effects campus chaplaincy can have in NetVUE member colleges and universities will be followed by questions and discussion.



Bobby Fong became president of Ursinus College in 2011, having previously served for a decade as president of Butler University. His academic career began as professor of English at Berea College and continued as dean of arts and humanities at Hope College and then as dean of the faculty at Hamilton College. Fong is past chair of the board of the Association of American Colleges and Universities and serves on the board of the Council for Higher Education Accreditation, the President's Council of the Association of Governing Boards, the national advisory board for the National Survey of Student Engagement, and the NetVUE Advisory Council.

Chair: **Marianne E. Inman**, President Emerita, Central Methodist University

Noon

South Reception Foyer

BOXED LUNCHES AND DEPARTURES

Noon–3:00 p.m.

E L411/413

NetVUE ADVISORY COUNCIL MEETING



Advisory Council and Staff

NETWORK FOR VOCATION IN UNDERGRADUATE EDUCATION ADVISORY COUNCIL

Donna M. Carroll
President
Dominican University (IL)

Judith L. Cebula
Director, Center for Faith
and Vocation
Butler University

Darrel D. Colson
President
Wartburg College

Joel L. Cunningham
Vice Chancellor and President
Emeritus
Sewanee: The University of
the South

Bobby Fong
President
Ursinus College

David S. Guthrie
Professor of Higher Education
Geneva College

Marianne E. Inman
President Emerita
Central Methodist University

Leanne M. Neilson
Provost and Vice President
of Academic Affairs
California Lutheran
University

Lisa D. Rhodes
Director, Sisters Center for
WISDOM
Spelman College

Paul J. Wadell
Professor of Religious Studies
St. Norbert College

CIC AND NETVUE STAFF

Allison Blackburn
Director of Conferences

Michael G. Cartwright
Director, NetVUE Chaplaincy
Conferences

Richard Ekman
President

Harold V. Hartley III
Senior Vice President

Joy Jump
Conference and Program
Coordinator

Shirley J. Roels
Senior Advisor for NetVUE

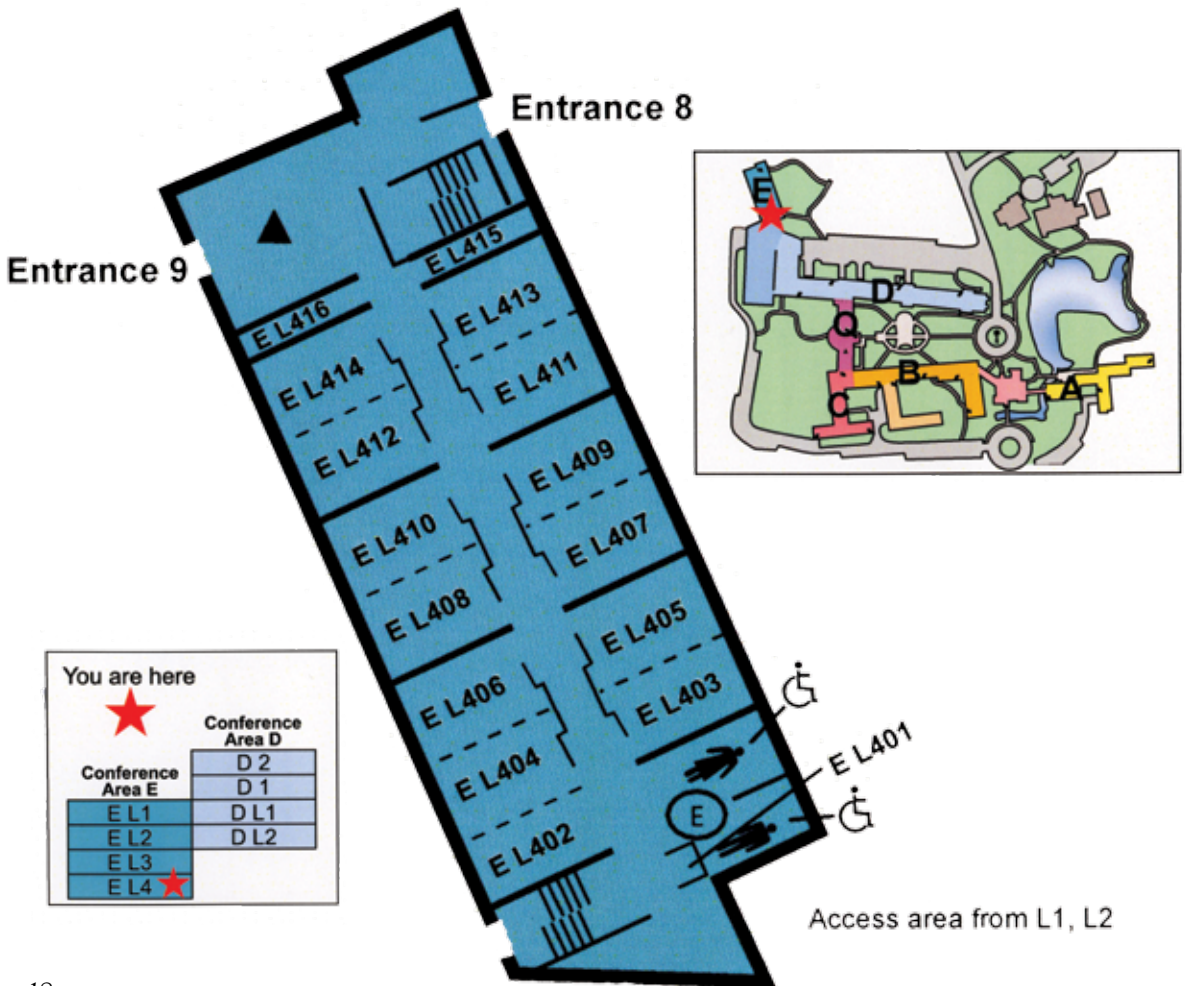
Lynne Spoelhof
NetVUE Administrative
Assistant

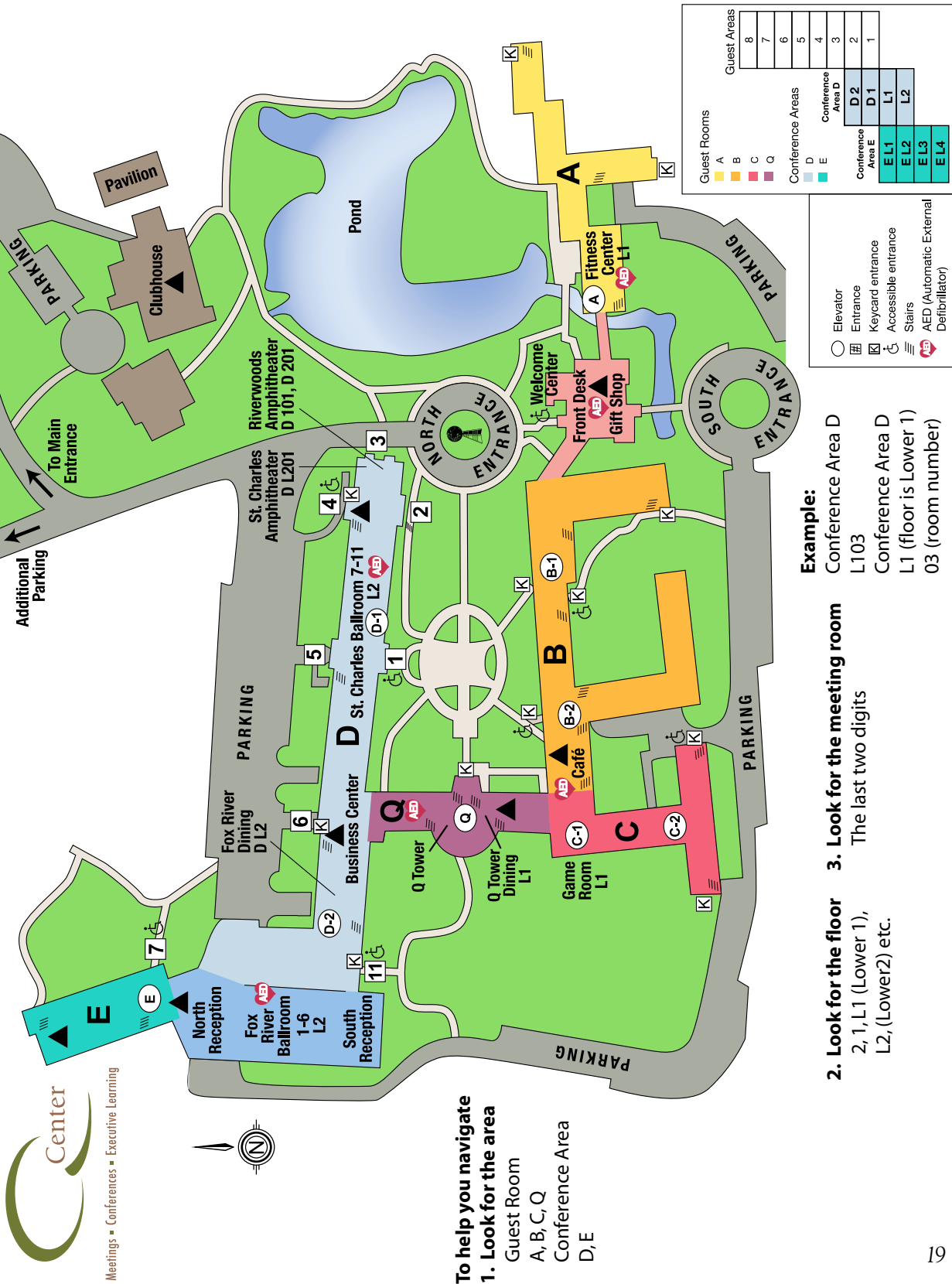


Hotel Floor Plan and Map



Q Center
 1405 North Fifth Avenue
 St. Charles, IL 60174
 Phone: (877) 774-4627
www.qcenter.com







Notes



FSC

100%
Paper

FSC® C068104



THE COUNCIL OF
INDEPENDENT COLLEGES

One Dupont Circle, NW, Suite 320 ♦ Washington, DC 20036-1142
Phone: (202) 466-7230 ♦ Fax: (202) 466-7238 ♦ www.cic.edu