



THE COUNCIL OF
INDEPENDENT COLLEGES

NETWORK FOR VOCATION IN UNDERGRADUATE EDUCATION

Sustaining the Theological Exploration of Vocation

St. Louis, Missouri ♦ March 26–28, 2015

∞ Conference Program ∞

TABLE OF CONTENTS

Conference Welcome	1
Schedule-at-a-Glance	2
Thursday, March 26	5
Friday, March 27	8
Saturday, March 28	19
Hotel Information	26
Advisors and Staff	27
Guidebook, Twitter, and WiFi Information	<i>inside back cover</i>

*The Council of Independent Colleges
gratefully acknowledges the generous support of
Lilly Endowment Inc.*

NETWORK FOR VOCATION IN UNDERGRADUATE EDUCATION

Sustaining the Theological Exploration of Vocation

CONFERENCE WELCOME

Welcome to the third national conference of the Network for Vocation in Undergraduate Education (NetVUE). The purpose of NetVUE is to serve as a nationwide network of colleges and universities that enriches the intellectual and theological exploration of vocation among undergraduate students. This initiative is administered by the Council of Independent Colleges (CIC) with generous support from Lilly Endowment Inc. and membership dues.

NetVUE has five main goals:

- ◆ Deepen the understanding of the intellectual and theological dimensions of vocational exploration;
- ◆ Examine the role of vocational exploration in a variety of institutional contexts;
- ◆ Share knowledge, best practices, and reflection on experiences across participating campuses;
- ◆ Facilitate the incorporation of additional colleges and universities into this enterprise; and
- ◆ Develop a network for sustaining an extended program in the intellectual and theological exploration of vocation.

Since CIC's launch of NetVUE in late 2009, membership has increased to 187 colleges and universities. These institutions, which are rooted in the liberal arts, represent a range of religiously-affiliated institutions as well as other independent colleges and universities. All have a desire to address the intellectual and theological exploration of vocation in the classroom, in student life, and in service to the community.

We welcome your participation in the 2015 NetVUE Conference. Through this event, NetVUE seeks to increase the capacity of member institutions to guide the development of future leaders who are theologically literate, whose attitudes and behavior are shaped by their values and commitments, and who are eager to sustain a life of service guided by a sense of calling. As NetVUE has become established, its member institutions have assumed a significant share of the program's leadership and NetVUE's expenses to allow sustainable support for this ongoing network. We look forward to learning from one another in the next few days, sharing ideas for strengthening the exploration of vocation on our campuses, and supporting the development of NetVUE in the years to come.

SCHEDULE-AT-A-GLANCE

THURSDAY, MARCH 26

8:30 a.m.–12:15 p.m.

**Meeting of the Association
of Catholic Colleges and
Universities**

Illinois Central

Noon–6:00 p.m.

Conference Registration

*Grand and Regency Ballroom
Foyer*

2:30 and 2:50 p.m.

**Opportunities for Vocational
Reflection (Optional)**

Midway Suites I and III

3:30–4:45 p.m.

Welcome and Opening Plenary

Address: Jennifer A. Lindholm

**“Investing in Vocational
Development: The Value of
Spiritual Capital”**

Grand Ballroom

5:00–6:00 p.m.

**Small-Group Discussions by
Campus Role**

6:00–6:30 p.m.

Book Signing

*Grand and Regency Ballroom
Foyer*

6:15–7:00 p.m.

Welcoming Reception

Pegram and Midway

7:00–8:30 p.m.

Dinner with Remarks

Midway

FRIDAY, MARCH 27

7:00 a.m.–5:30 p.m.

Conference Registration

*Grand and Regency Ballroom
Foyer*

7:00–8:30 a.m.

**Breakfast with Topical
Discussions**

Midway

7:30–8:30 a.m.

**Opportunities for Vocational
Reflection (Optional)**

*Midway Suite II and Regency
Ballroom C*

8:45–10:00 a.m.

Plenary Session Panel

**Educating for Vocation: Maria
J. de la Cámara, Judith A.
Muyskens, and R. Richard Ray
“Aligning Mission, Culture, and
Resources”**

Grand Ballroom

10:00–10:30 a.m.

Refreshment Break

Ballroom Foyers B and C

10:30–11:15 a.m.

**CONCURRENT CAMPUS
PRESENTATIONS**

**Cocurricular Initiatives for
Vocation Formation**

Regency Ballroom C

**Creating a Culture of Purpose
by Deepening Vocational
Exploration and Developing
Sustainable Programming**

Midway Suites III and IV

**Faculty Development That
Sustains Vocation**

Grand Ballroom B

**Institutional Reflection:
The Impetus for Engaging
Undergraduate Students in
Intentional and Sustained
Vocational Conversations**

Regency Ballroom A

**Measuring the Strength of
Community Partnerships**

Grand Ballroom C

**Raising Students’ Calling
Quotient: Integrating Vocation
and Calling across the
Curriculum**

Regency Ballroom B

**Vocational Exploration through
General Education: Building
and Sustaining a Campus
Culture**

Grand Ballroom A

11:30 a.m.–12:15 p.m.
CONCURRENT CAMPUS
PRESENTATIONS

**Discerning Vocation in the
Jesuit Tradition: How Service
Learning Impacts Careers and
Calling**

Grand Ballroom A

Holistic Student Advising

Regency Ballroom C

**Let's Start at the Very
Beginning: A Baseline Measure
of Vocational Formation**

Grand Ballroom C

**Making a Sum That Is More
Than Its Parts: Vocation
Interwoven throughout the
College Experience**

Grand Ballroom B

Presidents Open Forum

Midway Suites III and IV

**Vocational Discernment and
Community: Lessons from the
Classroom and the Servant
Leadership House**

Regency Ballroom B

**Where from Here? Sustaining
Faculty Involvement**

Regency Ballroom A

12:30–1:30 p.m.
Lunch by Campus Role

Midway

1:45–3:00 p.m.

**Plenary Session: Krista Tippett
“The Adventure of Vocation:
Seeking Meaning in an Uncivil
Age”**

Grand Ballroom

3:00–3:30 p.m.

Book Signing

*Grand and Regency Ballroom
Foyer*

3:00–3:30 p.m.

Refreshment Break

Ballroom Foyers B and C

3:30–4:45 p.m.

CONCURRENT SESSIONS:
VOCATIONAL RESOURCES
FOR ENRICHING CAMPUS
INITIATIVES

**A Conversation with Krista
Tippett**

Grand Ballroom C

**Connecting Campus Chaplaincy
with Vocational Exploration**

Regency Ballroom B

**Finding Vocation in Interfaith
Engagement**

Regency Ballroom C

Future Jobs as Callings

Grand Ballroom B

**NetVUE Scholarly Resources:
What We Are Learning**

Grand Ballroom A

5:00–5:45 p.m.

**Business Meeting of NetVUE
Members**

Grand Ballroom

5:45–6:30 p.m.

Reception

Pegram and Midway

6:30 p.m.

Dinner on Your Own

SATURDAY, MARCH 28

7:00 a.m.–Noon

Conference Registration

*Grand and Regency Ballroom
Foyer*

7:00–8:15 a.m.

**Breakfast Discussions in
Campus Teams**

Midway

7:00–8:15 a.m.

**Opportunities for Vocational
Reflection (Optional)**

Midway Suites II and IV

8:30–9:15 a.m.

CONCURRENT CAMPUS
PRESENTATIONS

**Alumni Speak Out:
Undergraduate Education as a
Faith-Mentoring Environment**

Grand Ballroom C

**Engaging Students to Pursue a
Richer Sense of Vocation**

Grand Ballroom A

**Integrating NetVUE with the
Values of a Franciscan University**

Regency Ballroom B

NetVUE Grant Opportunities

Midway Suite III

**Shared Faculty and Staff
Development Strategies**

Grand Ballroom B

**Sustaining Vocation through
Curricular Strategies**

Regency Ballroom C

Transitional Times: Navigating the Spaces that Separate Convocation, Vocation, and Baccalaureate in a Religiously Plural Community
Regency Ballroom A

9:30–10:15 a.m.
CONCURRENT CAMPUS PRESENTATIONS

A Work in Progress: Lessons Learned from the Implementation of a Peer Vocation Mentoring Program
Grand Ballroom C

Experiential Education and Vocational Formation
Regency Ballroom C

How Then Shall I Live? The SOPHIA (Sophomore Initiative at Assumption) Program
Grand Ballroom B

Reflecting on Reflections: Engaging First-Year Students in Vocational and Personal Inquiry
Regency Ballroom A

The Pope Francis Challenge: Calling Students to the Margins
Regency Ballroom B

The Vocation in College Project: Educating Students toward Human Flourishing and Lifelong Pursuit of the Common Good
Grand Ballroom A

Vocational Discernment and Action: Building Mentoring Communities for Students, Faculty, and Staff through International Retreats and Faith Conversation
Midway Suite III

10:15–10:30 a.m.
Refreshment Break
Ballroom Foyers B and C

10:30 a.m.–Noon
Closing Plenary Session: Jonathan L. Walton
“Empowering Students in the Vocational Call to Social Justice”
Grand Ballroom

Noon–12:30 p.m.
Book Signing
Grand and Regency Ballroom Foyer

Noon
Boxed Lunches and Departures
Midway

12:30–4:00 p.m.
NetVUE Advisory Council Meeting
Midway Suite IV

THURSDAY, MARCH 26

8:30 a.m.–12:15 p.m.

Illinois Central

MEETING OF THE ASSOCIATION OF CATHOLIC COLLEGES AND UNIVERSITIES

Challenges to Discernment in an Age of Instant Messages

Conveners:

Michael Galligan-Stierle, President, Association of Catholic Colleges and Universities

Melanie-Prejean Sullivan, Director of Campus Ministry, Bellarmine University

Note: Separate registration is required for this event.

Noon–6:00 p.m.

Grand and Regency

Ballroom Foyer

CONFERENCE REGISTRATION

2:30 and 2:50 p.m.

OPPORTUNITIES FOR VOCATIONAL REFLECTION *(Optional)*

Conference participants are invited to take part in guided experiences to reflect on the nature of vocation.

Midway Suite III

Midway Suite I

Vocation and Creative Service: A Film Excerpt

Vocational Reflection with Art, Music, and the Psalms



3:30–4:45 p.m.

Grand Ballroom

THURSDAY

WELCOME AND CONFERENCE OVERVIEW

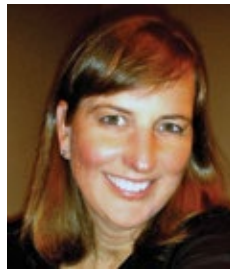
Richard Ekman, President, CIC

Shirley J. Roels, Senior Advisor and Director of NetVUE, CIC

OPENING PLENARY ADDRESS

Investing in Vocational Development: The Value of Spiritual Capital

To sustain campus communities where the life of the mind and the life of the heart are mutually celebrated and supported requires reconsideration of habitual perspectives and practices. To welcome and engage students in environments that support vocational development, faculty members, staff, and administrators must look closely not just at what we do (or do not do) but also why. At the heart of these considerations are issues of authenticity, meaning, and purpose. Building on insights gleaned through the decade-long Spirituality in Higher Education study, the project director will present findings from new research that examines how faculty members conceptualize and experience the spiritual dimension of their lives, how they perceive the intersections between spirituality and higher education, and what implications their inclinations have for undergraduate education and faculty life within academic workplaces.



Jennifer A. Lindholm is assistant vice provost in UCLA's division of undergraduate education. In that capacity, she is responsible for coordinating campus-wide initiatives associated with enhancing teaching and learning, addressing accreditation-related considerations, and facilitating student success. Before joining the division, she served as associate director of the Cooperative Institutional Research Program at UCLA's Higher Education Research Institute and as director of the institute's Triennial National Faculty Survey. During that period, Lindholm also held a joint appointment as visiting professor of higher education and organizational change in UCLA's Graduate School of Education and Information Studies. In addition, she was director and co-investigator for the decade-long Spirituality in Higher Education project and coauthored *Cultivating the Spirit: How College Can Enhance Students' Inner Lives* (2011). Lindholm's most recent book is *The Quest for Meaning and Wholeness: Spiritual and Religious Connections in the Lives of College Faculty* (2014). Her other research and writing focus on the structural and cultural dimensions of academic work; the career development, work experiences, and professional behavior of college and university faculty; issues related to institutional change; and undergraduate student development. Lindholm

also works as a consultant to colleges and universities on topics related to her areas of research and administrative expertise.

Chair: **Lisa D. Rhodes**, Dean of Sisters Chapel and Director of Sisters Center for WISDOM, Spelman College

5:00–6:00 p.m.

SMALL-GROUP DISCUSSIONS BY CAMPUS ROLE

Participants will meet in small groups of campus leaders who serve in similar roles. The groups will discuss the effectiveness of different approaches to sustaining programs for intellectual and theological understanding of vocation based on institutional mission and participant experience. Each group also will consider ways to sustain vocational exploration efforts on their campus.

Note: Conference participants are assigned to specific groups and meeting rooms. Please consult conference materials for details.

6:00–6:30 p.m.

*Grand and Regency
Ballroom Foyer*

BOOK SIGNING

Author: **Jennifer A. Lindholm**

6:15–7:00 p.m.

Pegram and Midway

WELCOMING RECEPTION

The reception provides an inviting setting to greet old friends and meet new ones.

7:00–8:30 p.m.

Midway

DINNER WITH REMARKS

Invocation: **J. Michael Pressimone**, President, Fontbonne University

Remarks: **Christopher L. Coble**, Vice President for Religion, Lilly Endowment Inc.

FRIDAY, MARCH 27

7:00 a.m.–5:30 p.m.

*Grand and Regency
Ballroom Foyer*

CONFERENCE REGISTRATION

7:00–8:30 a.m.

Midway

BREAKFAST WITH TOPICAL DISCUSSIONS

Several tables will be designated for participants to join colleagues in informal discussions of specific topics. Please consult conference materials for details.

7:30–8:30 a.m.

Midway Suite II

OPPORTUNITIES FOR VOCATIONAL REFLECTION *(Optional)*

Prayer Labyrinth

8:00–8:30 a.m.

Regency Ballroom C

Liturgy and Prayer in the Christian Tradition

Worship Leader: **Thomas E. Macfie**, University Chaplain, Sewanee:
The University of the South

8:45–10:00 a.m.

Grand Ballroom

PLENARY SESSION PANEL

Educating for Vocation: Aligning Mission, Culture, and Resources

In what ways can academic leaders strengthen vocational exploration among undergraduate students? Chief academic officers of three NetVUE member colleges and universities will discuss strategies for faculty development, student advising, and curricular design in undergraduate education to enhance students' sense of meaning, purpose, and direction. Panelists will consider how colleges and universities can extend a theological exploration of vocation and calling among students through faculty development and the infusion of vocational themes into educational programs.

Maria J. de la Cámara, Interim Provost and Vice President for Academic Affairs,
Benedictine University (IL)

Judith A. Muyskens, Provost, Nebraska Wesleyan University

R. Richard Ray, Provost, Hope College

Moderator: **Darrel D. Colson**, President, Wartburg College

10:00–10:30 a.m.

Ballroom Foyers B and C

REFRESHMENT BREAK

10:30–11:15 a.m.

Regency Ballroom C

CONCURRENT CAMPUS PRESENTATIONS

Cocurricular Initiatives for Vocation Formation

Benedictine University (IL), Furman University, and University of Saint Francis (IN)

How can smaller communities of vocation-based practices within the larger campus setting help students with vocational exploration? How can these vocational communities be shaped by leaders of cocurricular initiatives? Leaders from three universities will describe their efforts to create campus communities that teach students to live their callings by using sophomore travel experiences, athletic teams, and intentional small groups focused on vocation.

Susan S. D'Amato, Administrative Director, Cothran Center for Vocational Reflection, Furman University

Tarah Ellington Geye, Assistant Athletic Trainer, Benedictine University (IL)

Lewis T. Pearson, Assistant Professor of Philosophy and Theology and Director of the Undergraduate Program, University of Saint Francis (IN)

Chair: **David S. Guthrie**, Professor of Higher Education, Geneva College

Midway Suites III and IV

Creating a Culture of Purpose by Deepening Vocational Exploration and Developing Sustainable Programming

Elizabethtown College

Presenters will describe program development and implementation efforts at Elizabethtown College, highlighting approaches taken to build sustainable programming that develops vocational understanding and commitment. The discussion will consider faculty, staff, and student retreats and workshops; a new campus-wide Sophomore Year Experience with an emphasis on vocational discernment; and quantitative and qualitative findings of program assessment.

Joel C. Janisewski, Assistant Director of Prestigious Scholarships and Fellowships

E. Fletcher McClellan, Dean of the Faculty and Professor of Political Science

Stacey L. Zimmerman, Assistant Director, Called to Lead Program

Grand Ballroom B

Faculty Development That Sustains Vocation

St. Edward's University and Valparaiso University

An understanding of vocation can aid the integration of new faculty and staff members into the distinctive mission and culture of an institution. Panelists from two NetVUE member institutions will discuss the rationale, practices, and content of initiatives to orient and develop new faculty and administrative leaders.

Brian T. Johnson, Executive Director of Campus Ministries, Valparaiso University

Steven M. Rodenborn, Associate Professor and Chair, Religious and Theological Studies, St. Edward's University

Chair: **Kathryn Kleinhans**, Professor of Religion and Director, Discovering and Claiming Our Callings, Wartburg College, and NetVUE Scholar

Regency Ballroom A

Institutional Reflection: The Impetus for Engaging Undergraduate Students in Intentional and Sustained Vocational Conversations

Wisconsin Lutheran College

How can a campus community engage in intentional conversations focused on vocation to prepare students for lives of Christian leadership? Leaders from Wisconsin Lutheran College will share the evolving processes implemented since 2010 to attain this goal and will highlight curricular and cultural changes as a result. Presenters also will provide assessment data that have informed their work.

Erik P. Ankerberg, Assistant Provost and Associate Professor of English

David F. Brightsman, Dean, College of Professional Studies

Grand Ballroom C

Measuring the Strength of Community Partnerships

Aquinas College (MI)

Community engagement is central to vocational exploration and can help foster college-community partnerships. The presenter will review the process used by Aquinas College to develop an easily managed partner dataset; describe the Aquinas College dataset and maintenance process; and demonstrate a template for a Partnership Strength Score and the uses of this metric across the institution.

Kathy S. Kremer, Dean of Curriculum

Regency Ballroom B

Raising Students' Calling Quotient: Integrating Vocation and Calling across the Curriculum

Northwest Christian University

How can educators and spiritual leaders shape contexts, relationships, and practices that help students discover and pursue their calling? The session will address the collaboration, curriculum, and systems needed to create a university culture that increases students' capacity to discern their vocation—and have fun at the same time!

Troy J. Dean, Campus Pastor and Assistant Professor of Christian Ministry

Angela J. Doty, Director of Academic Services and Career Development

Grand Ballroom A

Vocational Exploration through General Education: Building and Sustaining a Campus Culture

Edgewood College

Presenters will describe Edgewood College's approach to develop an understanding of vocation through the COR Curriculum, a three-course sequence that integrates study, reflection, and action. Assessment of student learning and program effectiveness, along with case studies from program instructors, from over five years of implementation will be presented.

Mary Elizabeth Bathum, Associate Professor of Nursing

Kristine M. Mickelson, Dean, School of Integrative Studies and Director, COR General Education Program

Dean A. Pribbenow, Vice President for Academic Affairs and Academic Dean

Donna L. Vukelich-Selva, Associate Professor of Education



11:30 a.m.–12:15 p.m.
Grand Ballroom A

CONCURRENT CAMPUS PRESENTATIONS

Discerning Vocation in the Jesuit Tradition: How Service Learning Impacts Careers and Calling

John Carroll University and Saint Louis University

Through vocational exploration in service-learning courses, students reflect on their gifts and determine how they might use them to serve others. Presenters will describe how survey data across four Jesuit institutions (Gonzaga University, Loyola University Chicago, John Carroll University, and Saint Louis University) were used to determine the impact of service learning on vocational discernment, including career choices, spiritual development, and calling.

Margaret O. Finucane, Associate Professor of Communication, John Carroll University

Samantha C. Guarnieri, Assistant Director of Student Engagement, John Carroll University

Robert P. Wassel, Assistant Director, Center for Service and Community Engagement, Saint Louis University

Regency Ballroom C

Holistic Student Advising

Augustana College (IL), Bluffton University, and Illinois College

Leaders of three NetVUE institutions will discuss the purposes, structures, and strategies they have used to develop a holistic approach to student advising. They will describe how vocational exploration is integrated through inquiry, experience, reflection, and transition over the four undergraduate years. Panelists will explore fresh ideas about structure and professional development.

Shari L. Ayers, Director, Center for Career and Vocation, Bluffton University

Andrew B. Jones, Dean of Student Success and Assistant Professor of Education and Gender and Women's Studies, Illinois College

Kristen Glass Perez, Chaplain and Director for Vocational Exploration, Augustana College (IL)

Chair: **Cynthia A. Wells**, Assistant Professor of Higher Education and Boyer Center Fellow, Messiah College, and NetVUE Scholar

Grand Ballroom C

Let's Start at the Very Beginning: A Baseline Measure of Vocational Formation

Our Lady of the Lake College (LA)

How does an institution assess student progress in vocational formation? Our Lady of the Lake College developed a baseline measure of vocation across the curriculum for an associate's degree for physical therapist assistants. The college surveyed students and faculty members in health professions, science, and liberal arts regarding their beliefs about and approaches to vocation. The presenter will discuss data collected and plans for improving outcomes.

Christine A. Cook, Instructor, Physical Therapist Assistant Program

Grand Ballroom B

Making a Sum That Is More Than Its Parts: Vocation Interwoven throughout the College Experience

Point Loma Nazarene University

How does an institution connect vocation throughout the undergraduate years? Point Loma Nazarene University is weaving together first-year general education classes, sophomore cocurricular experiences, and junior and senior academic work in the majors to create a more coherent path to students' vocational discernment. Presenters will discuss progress to date and what the academic community is learning.

Max E. Butterfield, Assistant Professor of Psychology

Kerry D. Fulcher, Provost and Professor of Biology

Maria R. Zack, Special Assistant to the President and Chair, Mathematics and Computer Science

Midway Suites III and IV

Presidents Open Forum (*Open to currently-serving presidents*)

This session will encourage a candid and in-depth conversation among presidents regarding changing institutional contexts and next steps for long-term sustainability of vocational exploration initiatives. Two members of the NetVUE Advisory Council will facilitate a discussion about ways to strengthen campus vocational initiatives in relationship to institutional mission and resources.

Donna M. Carroll, President, Dominican University (IL)

Joel L. Cunningham, Vice Chancellor Emeritus and Professor of Mathematics, Sewanee: The University of the South

Regency Ballroom B

Vocational Discernment and Community: Lessons from the Classroom and the Servant Leadership House

Finlandia University

Examples from two different community experiences, classroom study in communications and a special-interest student residence called the Servant Leadership House, will illustrate the importance of community in the vocational discernment process. Panelists will describe how the classroom setting provides students with an experience of community and how service, leadership, and community are defined and practiced at the Servant Leadership House.

René E. Johnson, Director, Servant Leadership and Associate Professor of Religion

Diane M. Miller, Assistant Professor of Communication

Regency Ballroom A

Where from Here? Sustaining Faculty Involvement

Montreat College

Learn about efforts to build and sustain a culture and language of vocational exploration among faculty members. Presenters will discuss sustained efforts to develop curricula and enhance advising; achievement of faculty participation in a vocation symposium and student retreats; and lessons learned in planning and implementation of these initiatives.

Paul J. Maurer, President

Thomas L. Oxenreider, Associate Dean for Calling and Career

12:30–1:30 p.m.

Midway

LUNCH BY CAMPUS ROLE

Conference participants are asked to sit at tables designated by campus role.

1:45–3:00 p.m.

Grand Ballroom

PLENARY SESSION

The Adventure of Vocation: Seeking Meaning in an Uncivil Age

Our world is awash with urgent questions of survival, of meaning, of how we structure our common life, and of who we are with each other. It seems that we are more divided than ever before—unable to listen and speak across the differences that we must engage to create the world we want for ourselves and others. The Civil Conversation Project of the public radio show, *On Being*, has demonstrated that the call to civility is a vocational adventure supported by faith-based traditions and virtues. Vocational exploration on college campuses can equip undergraduates to become forces for wisdom and healing.



Krista Tippett is a Peabody Award-winning broadcaster and creator and host of the public radio show, *On Being*. She grew up in Oklahoma, studied history at Brown University, and spent most of the 1980s in divided Germany. She was a *New York Times* stringer in Berlin and later served as a special political assistant and chief Berlin aide to the U.S. ambassador to West Germany. When she graduated from Yale University with a master of divinity degree, she saw a need to provide

intelligent journalistic coverage of religion. As she conducted an oral history project for the Benedictines of St. John's Abbey in Collegeville, Minnesota, Tippett began to imagine radio conversations about the spiritual and intellectual content of faith that would enliven and open imaginations and public discussion. The show she created, initially called *Speaking of Faith* and later renamed *On Being*, is now heard on nearly 300 public radio stations and downloaded by millions as a podcast. Tippett and her guests trace the ancient, animating questions of human existence: What does it mean to be human? What matters in a life? How are we of service to each other and to the world? Her first book, *Speaking of Faith: Why Religion Matters and How to Talk About It* (2007), is a memoir of religion in our time, written in part to answer how she moved from a mode of geopolitical engagement to become a religious person and student of theology. Her second book, *Einstein's God: Conversations about Science and the Human Spirit* (2010), argues that science and religion, far from being mutually exclusive, are complementary realms of inquiry. Tippett's goal is to understand how religious revelations, diverse spiritual practices, and cutting-edge advances in science and medicine can inspire and improve the way we live our lives. Tippett's newest initiative, the Civil Conversations Project, is a public forum that provides ideas and tools for healing our fractured civic spaces. It brings together thought leaders, activists, and everyday people representing diverging viewpoints in conversations to explore tough questions. In July 2014, President Obama awarded Tippett a National Humanities Medal for outstanding achievement in deepening the nation's engagement with the humanities and providing important cultural commentary.

Chair: **Paul C. Pribbenow**, President, Augsburg College

3:00–3:30 p.m.

Grand and Regency
Ballroom Foyer

BOOK SIGNING

Author: **Krista Tippett**

3:00–3:30 p.m.

Ballroom Foyers B and C

REFRESHMENT BREAK

3:30–4:45 p.m.

Grand Ballroom C

CONCURRENT SESSIONS: VOCATIONAL RESOURCES FOR ENRICHING CAMPUS INITIATIVES

A Conversation with Krista Tippett

Participants will meet with Tippett to delve into her thoughts on vocation, virtues, and practical spiritual disciplines for nourishing common life in the 21st century.

Krista Tippett, Creator and Host, *On Being*

Chair: **Leanne M. Neilson**, Provost and Vice President for Academic Affairs, California Lutheran University

Regency Ballroom B

Connecting Campus Chaplaincy with Vocational Exploration

What have NetVUE members learned over the past year about ways to strengthen campus chaplaincy and its intersections with vocational exploration? This session will consider learning that has been generated through NetVUE's engagement with campus chaplains, directors of religious life, and senior administrators from NetVUE member institutions. Panelists will address changing student faith dynamics and institutional contexts as well as configurations for effective ministry on campus.

Michael G. Cartwright, Director, NetVUE Chaplaincy Conferences, CIC, and Dean of Ecumenical and Interfaith Programs, University of Indianapolis

Paul H. W. Rohde, Campus Pastor, Augustana College (SD)

Melanie-Prejean Sullivan, Director of Campus Ministry, Bellarmine University

Chair: **Terry F. Walker**, Director of Chapel Relations, Morehouse College

Regency Ballroom C

Finding Vocation in Interfaith Engagement

Interfaith engagement is a rising priority for many colleges and universities. NetVUE and Interfaith Youth Core (IFYC) are learning more about how campus climate relates to religious diversity and vocational exploration. They also are exploring institutional initiatives that encourage interfaith understanding and appreciation. In this discussion, panelists will consider curricular and cocurricular initiatives that can increase the calling to interfaith awareness, respect, and action.

Katie Bringman Baxter, Vice President for Institutional Engagement, Interfaith Youth Core

Claire M. Noonan, Vice President for Mission and Ministry, Dominican University (IL)

Jon R. Powers, University Chaplain, Ohio Wesleyan University

Chair: **Daniel J. Ott**, Assistant Professor of Philosophy and Religious Studies, Monmouth College (IL)

Grand Ballroom B

Future Jobs as Callings

Colleges have multiple opportunities to teach students about the changing nature of employment and the ways in which it relates to a sense of purpose. What strategies and resources should institutions use to help students envision future work as a calling? How might a vision for vocation use assessment tools and career counseling in ways that connect with students' academic choices? How can cutting-edge research on career development and meaningful work inform these efforts? This session will explore the relationships among vocation, future employment, various means for personal exploration, and individual education plans.

Bryan J. Dik, Associate Professor of Psychology, Colorado State University, and Cofounder, Career Analytics Network

Chair: **Gloria Urrabazo**, Vice President of Mission and Ministry, Our Lady of the Lake University (TX)

Grand Ballroom A

NetVUE Scholarly Resources: What We Are Learning

New scholarship about vocation can deepen and sustain campus initiatives. In this session, the director of the NetVUE Scholarly Resources Project will provide an update on the project. Scholars will describe some of the frameworks they have generated and offer a preview of the content that will appear in the first of three forthcoming books.

Douglas V. Henry, Associate Professor of Philosophy, Baylor University

Darby K. Ray, Director of Harvard Center for Community Partnerships, Bates College

Caryn D. Riswold, Professor of Religion and Chair, Gender and Women's Studies, Illinois College

Paul J. Wadell, Professor of Religious Studies, St. Norbert College

Moderator: **David S. Cunningham**, Director, NetVUE Scholarly Resources Project, CIC, and Professor of Religion and Director, The CrossRoads Project, Hope College

5:00–5:45 p.m.

Grand Ballroom

BUSINESS MEETING OF NetVUE MEMBERS

The biennial meeting of NetVUE members will review NetVUE goals, membership, programs and activities, finances, and future plans and directions. NetVUE members will have the opportunity to ask questions and offer suggestions regarding NetVUE's continuing development. Each member institution should be represented by at least one member of the campus team.

Presiding: **Richard Ekman**, President, CIC

5:45–6:30 p.m.

Pegram and Midway

RECEPTION

The reception provides an opportunity for all NetVUE Conference participants to connect informally with colleagues.

6:30 p.m.

DINNER ON YOUR OWN IN ST. LOUIS

FRIDAY

SATURDAY, MARCH 28

7:00 a.m.–Noon

*Grand and Regency
Ballroom Foyer*

CONFERENCE REGISTRATION

7:00–8:15 a.m.

Midway

BREAKFAST DISCUSSIONS IN CAMPUS TEAMS

Campus teams are invited to discuss conference take-aways, raise questions about campus programs, and plan next steps to enrich vocational exploration on campus.

7:00–8:15 a.m.

Midway Suite II

OPPORTUNITIES FOR VOCATIONAL REFLECTION *(Optional)*

Prayer Labyrinth

Midway Suite IV

Vocational Reflection with Poetry and Art

8:30–9:15 a.m.

Grand Ballroom C

CONCURRENT CAMPUS PRESENTATIONS

Alumni Speak Out: Undergraduate Education as a Faith-Mentoring Environment

Goshen College

Building upon previous research about Goshen College students and employees, the presenter will discuss findings from a survey of alumni that examines their experiences of the college as a “faith mentoring environment.” What do we need to *know* regarding student faith development? How should we *be* as faith mentors? What can we *do* to nurture student faith?

Robert E. Yoder, Campus Pastor and Assistant Professor of Youth Ministry

Grand Ballroom A

Engaging Students to Pursue a Richer Sense of Vocation

Trinity Christian College

Business faculty members will discuss how they used findings from key questions about the integration of vocation into their academic program. Topics include: What does “vocation” mean, and how can we prepare students for their vocation? What do students need in order to live their vocation? How can external partnerships assist students in developing and living their vocation?

Richard A. Hamilton, Assistant Professor of Business

Kyle J. Harkema, Assistant Professor of Business

Lynn Spellman White, Professor of Accounting and Chair, Business Department

Regency Ballroom B

Integrating NetVUE with the Values of a Franciscan University

Alvernia University

The mission of Alvernia University, a Franciscan university, is expressed in its core values, particularly in the way it educates students to become “ethical leaders with moral courage.” Presenters will discuss the integration of these values as measured by an assessment rubric and a related assessment of first-year students’ understanding of the Franciscan tradition.

Samuel M. Bradley, Assistant Professor of Business

Roberta A. McKelvie, OSF, Special Assistant to the President for Mission Integration

Carol N. Schwanger, Associate Professor of Music

Midway Suite III

NetVUE Grant Opportunities

Council of Independent Colleges

NetVUE has several grant initiatives to develop and strengthen campus programs for the intellectual and theological exploration of vocation. These opportunities are generously supported by Lilly Endowment Inc. with funds available to NetVUE member institutions. Presenters will describe goals of the various NetVUE grant initiatives, eligibility requirements, application processes, and the experience of some grant recipients to date.

Harold V. Hartley III, Senior Vice President

Shirley J. Roels, Senior Advisor and Director of NetVUE

Grand Ballroom B

Shared Faculty and Staff Development Strategies

John Carroll University, Manchester College, and Monmouth College (IL)

How do colleges and universities provide faculty and staff opportunities to build their knowledge of vocational frameworks and institution-specific vocational vocabularies? Representatives from three NetVUE institutions will present their cross-divisional strategies to shape vocational conversations and learning among faculty and staff leaders.

Lord Edwin J. Carreon, Assistant Director of Residence Life, John Carroll University

Stacy L. Erickson, Associate Professor of English and Chair of the First Year Experience Council, Manchester College

Daniel J. Ott, Assistant Professor of Religious Studies, Monmouth College (IL)

Chair: **Peter E. Millet**, President, Stillman College

Regency Ballroom C

Sustaining Vocation through Curricular Strategies

Bluefield College, Hope College, and Loras College

How do NetVUE institutions embed vocational learning in the general education curriculum? Leaders of three NetVUE institutions will describe the content of and strategies for weaving vocation into new and revised courses rooted in the liberal arts as well as the processes for revision of the core curriculum.

Robert K. Boozer, Professor of Psychology and Director of General Education, Bluefield College

Mary Ellen Carroll, Associate Vice President for Academic Affairs and Dean of Experiential Learning, Loras College

Ryan J. White, Director of Academic Advising and First Year Seminars, Hope College

Chair: **Christine M. Fletcher**, Assistant Professor of Theology and Religious Studies, Benedictine University (IL), and NetVUE Scholar

Regency Ballroom A

Transitional Times: Navigating the Spaces that Separate Convocation, Vocation, and Baccalaureate in a Religiously Plural Community

Millsaps College

During a period of fiscal constraint and increasing religious diversity, how can colleges that want to support vocational inquiry maintain financially sustainable and inclusive programs? Presenters will discuss how the Faith and Work Initiative at Millsaps College has navigated financial challenges and demographic shifts to help students consider their vocations.

Christopher R. Donald, College Chaplain and Director of Religious Life

Ann R. Phelps, Adjunct Instructor and Former Director of the Faith and Work Initiative

Shelli M. Poe, Visiting Assistant Professor of Religious Studies and Director of the Faith and Work Initiative

9:30–10:15 a.m.

Grand Ballroom C

CONCURRENT CAMPUS PRESENTATIONS

A Work in Progress: Lessons Learned from the Implementation of a Peer Vocation Mentoring Program

Capital University (OH)

Capital University's peer vocation mentoring program, Compass, is a campus-wide collaborative effort that has experienced both successes and emerging challenges. The presenters will share lessons learned about the selection and training of "Compass Leaders" and the interactive role they play with other undergraduates in the development of the program.

Eric R. Anderson, Director, Career Development

Kelsey A. Jarrett, Assistant Director, Academic Success

Regency Ballroom C

Experiential Education and Vocational Formation

Samford University and The College of Wooster

Experiential learning beyond the campus can shape vocational formation in powerful ways. Leaders from two NetVUE institutions will explain how they have integrated experiential education with their institutional visions for vocational advising and discernment. They will discuss student outcomes and next steps in the development of their long-term strategies.

Nancy C. Biggio, Associate Provost for Administration, Samford University

Cathy L. McConnell, Associate Director of Advising and Experiential Learning, The College of Wooster

Chair: **Marianne E. Inman**, President Emerita, Central Methodist University

Grand Ballroom B

How Then Shall I Live? The SOPHIA (Sophomore Initiative at Assumption) Program

Assumption College

The presenters will describe the SOPHIA program as it has evolved since fall 2013. Presenters will share lessons learned from the implementation of this initiative that fosters a culture of vocational exploration among sophomores and will discuss the role of a NetVUE Program Development Grant in its development.

Louise Carroll-Keeley, Interim Provost

Neil R. Castronovo, Dean of Student Development and Counseling

Catherine M. WoodBrooks, Vice President for Student Affairs

Regency Ballroom A

Reflecting on Reflections: Engaging First-Year Students in Vocational and Personal Inquiry

Trinity University (TX)

Inspired by similar initiatives at Harvard and Stanford in 2013, Trinity piloted a voluntary cocurricular program, Reflections, to “create a time and space for first-year students at Trinity University to think about life’s big questions, articulate personal goals, and develop strategies to achieve them.” The session will include background information, a sample Reflections activity, and a debriefing conversation.

Lisa Jasinski, Special Projects Coordinator, Academic Affairs, and Project Director, Reflections

Regency Ballroom B

The Pope Francis Challenge: Calling Students to the Margins

Holy Cross College (IN)

Holy Cross College is implementing a program based on the Pope’s call to explore service and presence at the peripheries of life. Fifty students and ten faculty members at Holy Cross signed “Challenge” cards and are part of the group’s year-long commitments. Presenters will describe how the project is rooted in Pope Francis’s theology, how his message is being received by students, and how the Challenge is progressing.

Louis Albarran, Assistant Professor of Theology

Dianne Barlas, Director for the Center for Global Perspectives

Michael Griffin, Director of Service Learning and Assistant Professor of Theology

Grand Ballroom A

The Vocation in College Project: Educating Students toward Human Flourishing and Lifelong Pursuit of the Common Good

Taylor University

Presenters will introduce their research on college student vocational formation. *The Vocation in College Project* explores vocational formation as the intentional pursuit of human flourishing. The presentation will outline preliminary research findings about college students' understanding of vocation, the role of faith and vocation, the dimensions and contexts of vocation, the motivation to pursue vocation, and influences on vocation.

Jeff T. Aupperle, Director, Promising Ventures Program

Jessica A. Fankhauser, Assistant Director of Calling and Career

Drew B. Moser, Associate Dean of Students, Director of Calling and Career, and Assistant Professor of Higher Education

Midway Suite III

Vocational Discernment and Action: Building Mentoring Communities for Students, Faculty, and Staff through International Retreats and Faith Conversations

Pepperdine University

How does a university sustain vocational exploration? Presenters will describe two initiatives on vocational exploration that have been in practice at Pepperdine University for more than a decade. The first is faculty travel to one of the university's international facilities for a workshop on calling during which faculty members write and share their own vocational stories. The second is the university chaplain's leadership of discussions among students, faculty, and staff on such key topics as how learning embraces faith at Pepperdine.

Sara G. Barton, University Chaplain

Gary S. Selby, Director, Center for Faith and Learning and Professor of Communication

Donald M. Thompson, Professor of Great Books and Mathematics

REFRESHMENT BREAK

10:15–10:30 a.m.

Ballroom Foyers B and C

10:30–Noon
Grand Ballroom

CLOSING PLENARY SESSION

Empowering Students in the Vocational Call to Social Justice

How can students be empowered to engage in vocational exploration that leads to active and ongoing responses to injustice? Theologically based understandings of the call to social justice can inspire students to contribute to flourishing communities during and beyond their undergraduate years. Such a call to justice can address the intersection of vocational exploration, social justice, institutional structures, and daily life. When members of the campus community dig deeply into their own faith traditions and value systems, they can find resources to strengthen alliances across religious, racial, ethnic, and class differences.



Jonathan L. Walton is Plummer Professor of Christian Morals at Harvard University and Pusey Minister at Harvard's Memorial Church. He also is professor of religion and society at Harvard Divinity School. A social ethicist and scholar of American religions, Walton's research addresses the intersection of religion, politics, and media culture. He has published widely in scholarly journals such as *Religion and American Culture: A Journal of Interpretation* and *Pneuma: The Journal of the Society for Pentecostal Studies*.

His book, *Watch This! The Ethics and Aesthetics of Black Televangelism* (2009), disrupted commonly held assumptions that associate evangelical broadcasting with white, conservative evangelical communities and illuminated the ways televangelists' professed aims are frustrated by the media. Walton's work has been featured in national and international news outlets including the *New York Times*, CNN, and the BBC. An Atlanta native and graduate of Morehouse College, Walton earned an MDiv and PhD from Princeton Theological Seminary. He was assistant professor of religious studies at the University of California, Riverside, prior to joining the Harvard faculty.

Chair: **Fred P. Pestello**, President, Saint Louis University

Noon–12:30 p.m.
Grand and Regency
Ballroom Foyer

BOOK SIGNING

Author: **Jonathan L. Walton**

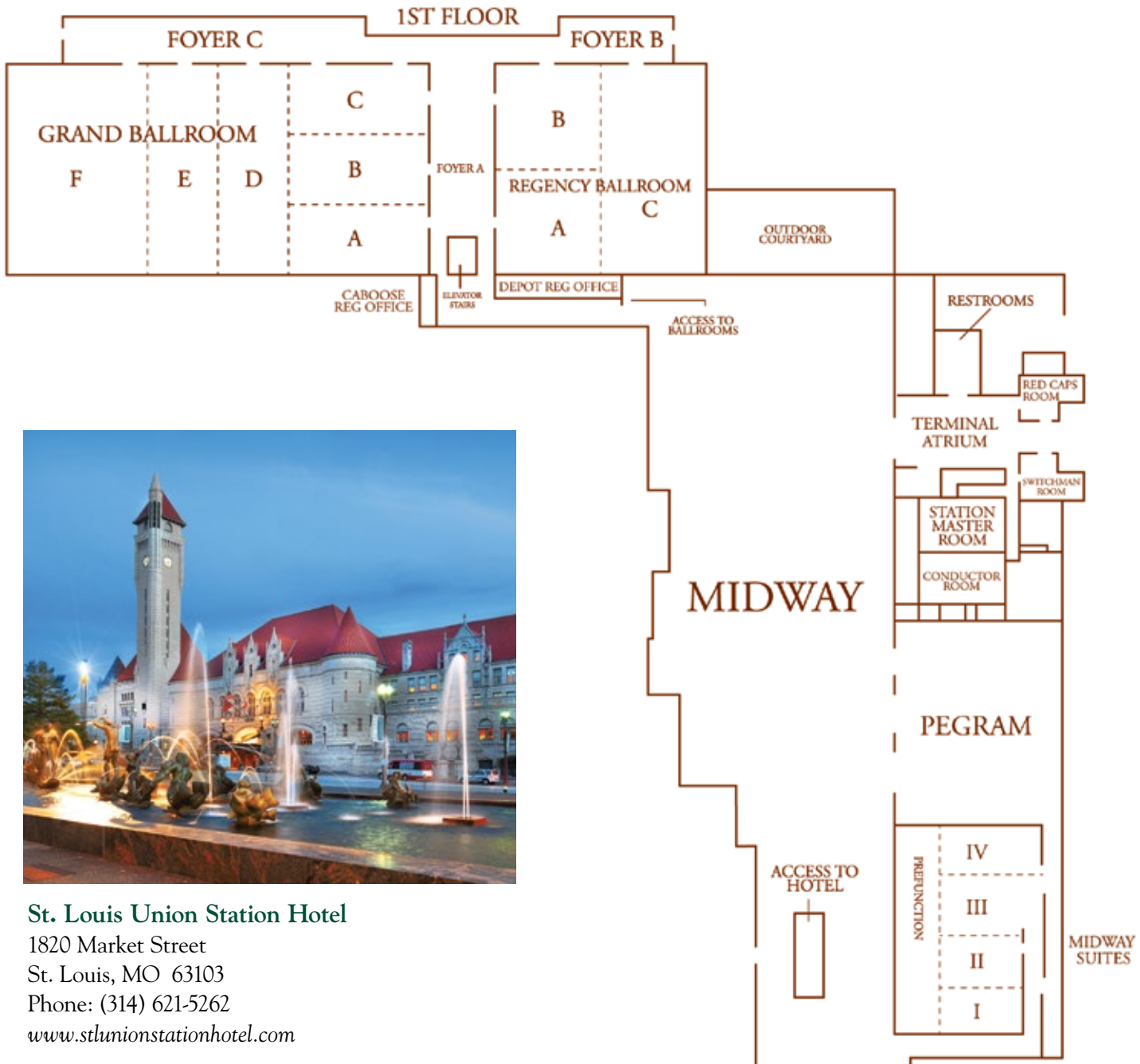
Noon
Midway

BOXED LUNCHES AND DEPARTURES

12:30–4:00 p.m.
Midway Suite IV

NetVUE ADVISORY COUNCIL MEETING

HOTEL INFORMATION



St. Louis Union Station Hotel

1820 Market Street

St. Louis, MO 63103

Phone: (314) 621-5262

www.stlunionstationhotel.com

ADVISORY COUNCIL AND STAFF

NetVUE ADVISORY COUNCIL

Stephen R. Briggs
President
Berry College

Donna M. Carroll
President
Dominican University (IL)

Darrel D. Colson
President
Wartburg College

Joel L. Cunningham
Vice Chancellor Emeritus and
Professor of Mathematics
Sewanee: The University of the
South

David S. Guthrie
Professor of Higher Education
Geneva College

Marianne E. Inman
President Emerita
Central Methodist University

Leanne M. Neilson
Provost and Vice President for
Academic Affairs
California Lutheran University

Lisa D. Rhodes
Dean of Sisters Chapel and Director,
Sisters Center for WISDOM
Spelman College

Tracy Wenger Sadd
Chaplain and Executive Director,
Purposeful Life Work and Ethical
Leadership
Elizabethtown College

Paul J. Wadell
Professor of Religious Studies
St. Norbert College

CIC AND NetVUE STAFF

Allison Blackburn
Director of Conferences

Michael G. Cartwright
Assistant Director of NetVUE

David S. Cunningham
Director, NetVUE Scholarly
Resources Project

Richard Ekman
President

Barbara Gombach
NetVUE Program Evaluator

Harold V. Hartley III
Senior Vice President

Shirley J. Roels
Senior Advisor and Director,
NetVUE

Lynne M. Spoelhof
NetVUE Program Coordinator

Vanessa N. Taylor
Conference and Program
Coordinator



IN MEMORIAM

Bobby Fong
1950—2014

President of Ursinus College (2011—2014)
President of Butler University (2001—2011)
Member of the NetVUE Advisory Council
(2009—2014)

NOTES

DOWNLOAD GUIDEBOOK, the Free Conference App

For the most up-to-date information, including newly registered participants and last-minute schedule changes, download the conference app on Guidebook. The app will be updated throughout the Conference.

1. Download the free Guidebook app by visiting <http://guidebook.com/g/2015NetVUE>.
2. Open the app and tap the “Download Guides” button.
3. Tap the “Redeem Code” button and enter **CICguide**. Due to its size, the guide may take a few minutes to load.

For assistance with downloading the app, please stop by the CIC Registration Desk.

FOLLOW THE CONFERENCE ON TWITTER

Participants can follow the NetVUE Conference on Twitter **@CICnotes** and comment about the Conference using the hashtag **#2015NetVUE**.

WIRELESS INTERNET ACCESS

Complimentary Wi-Fi is available in all meeting rooms at the St. Louis Union Station Hotel. If you need assistance, please see the CIC Registration Desk.



THE COUNCIL OF
INDEPENDENT COLLEGES

One Dupont Circle NW, Suite 320 ♦ Washington, DC 20036-1142

Phone: (202) 466-7230 ♦ Fax: (202) 466-7238 ♦ www.cic.edu