

2026 Presidents Institute

A Deeper Purpose



January 4-7, 2026 • Signia by Hilton Orlando Bonnet Creek • Orlando, FL



The Council of Independent Colleges

Using AI to Maximize Your Efficiency as President

Presenters

- Evan Duff
President
North Carolina Wesleyan University
- Rachelle Keck
President
Grand View University (IA)
- Burton Webb
President
University of Pikeville (KY)

Overview

Policies

Frameworks

Rewarding Innovation

Applications in Institutional Functions



Understanding AI's Role in Higher Education

Definition and Relevance

AI as a Partner

Impact on mission

Establishing Policies for AI Use

01

Proactive Policy Development

- Ethical considerations
- Data privacy and security

02

Collaboration

- Faculty, Staff, IT experts
- Stakeholder perspectives

03

Regular Review

Developing a Framework for AI Integration

Alignment with Mission

- Key areas
- Roadmap

Interdisciplinary Collaboration

Framework Elements

- Training and development for faculty and staff
- Infrastructure support



Rewarding Early Adopters and Innovators



Faculty and staff

- Awards and recognition
- Funding



Culture of innovation

- Workshops and seminars
- Highlight success stories

Applications of AI Across Institutional Functions



Teaching and Learning

- Personalized
- Academic Support



Marketing

- Targeted
- Prospective student engagement



Advancement

- Donor relations
- Fundraising



Accounting and Administration

- Automation
- Data Analysis

Conclusion and Call to Action

1

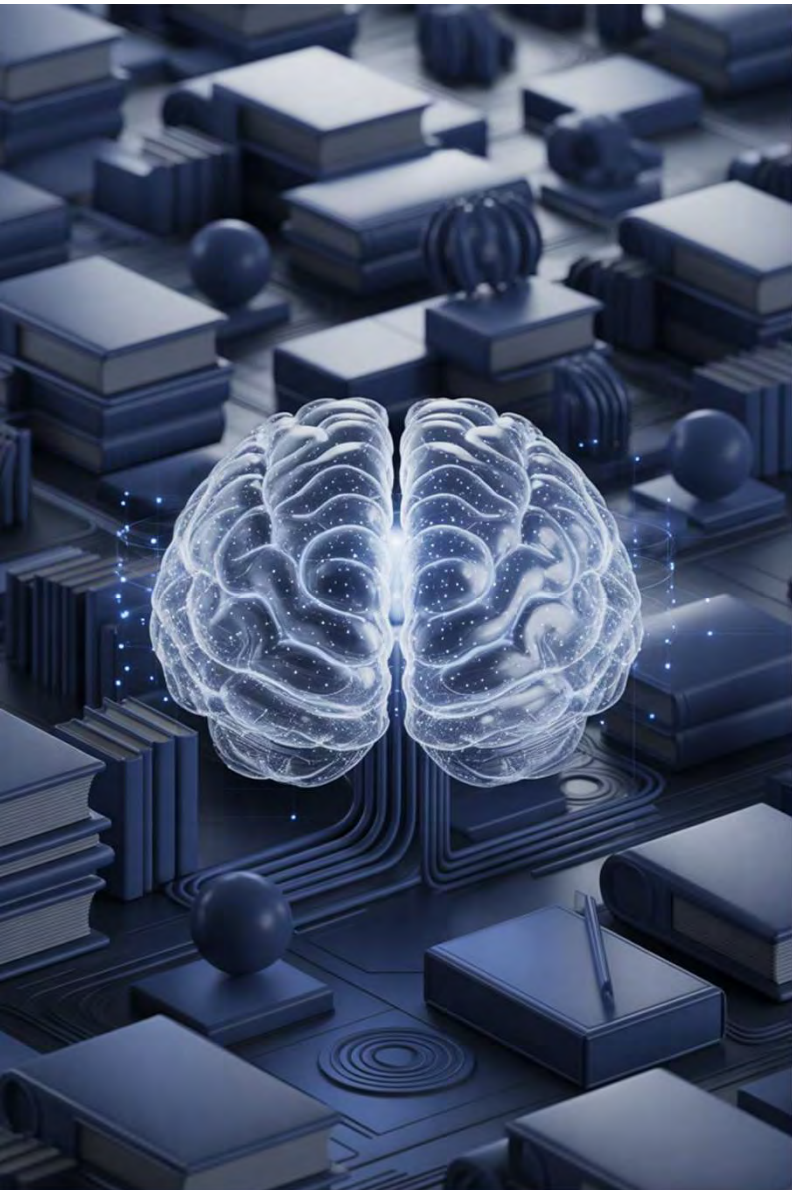
Embrace AI as a strategic partner

2

Collaboration

3

AI strategies related to mission



Minimizing Hallucinations

Focus your work on specific documents

Notebook LM (Google/Gemini)

Keep private data private

Reframing AI for Presidents



Addressing the Time Crisis



An Amplification Tool



Supporting, Not Replacing Human Judgment

**Consider AI not as a challenge, but as
your most diligent Chief of Staff.**



Three Power Applications

**Communication
Multiplier**



**Decision
Support**



**Time
Reclamation**

AI acts as a force multiplier for presidential efficacy, offering transformative capabilities across critical areas.

Dynamic Speech Drafting



"Draft a 5-minute convocation speech emphasizing innovation and student success"



"Create talking points for a donor donor meeting about our new STEM STEM initiative"



"Write an email to faculty about upcoming strategic planning sessions"

Strategic Planning Scan

- "Analyze enrollment trends in our region over the past 5 years and identify emerging opportunities"
- "What are the top 3 policy changes affecting higher education education that we should prepare for?"
- "Compare our institutional strengths against regional competitors"



Board Material Preparation



Executive Summary

"Summarize this 50-page accreditation report into a 2-page executive summary"



Performance Dashboard

"Create a dashboard showing our key performance metrics for the board meeting"



Critical Decisions

"Highlight the 5 most critical decisions needed from this financial report"

Personal Time Triage

1

Review Emails

"Review my emails and flag the 3 the 3 most urgent items requiring requiring my response"

2

Summarize Meetings

"Summarize the key points from from today's leadership team meeting notes"

3

Draft Responses

"Draft responses to these routine routine inquiries based on our standard policies"

Boundaries and Presidential Leadership

What NOT to do

Critical Boundaries

**Presidential AI
Use is Leadership**

**Modeling
Responsible
Innovation**

**Setting
Institutional
Tone**

We embrace tools that amplify human potential – we don't replace human wisdom.

Action Steps for the Week



Identify a Key Task



Request a First Draft



Refine with Your Expertise



Experience Time Reclamation

AI doesn't replace presidential judgment—it redeems time so we can exercise judgment more wise

Q&A



The Council of
Independent Colleges

A Deeper Purpose

| 2026 Presidents Institute

**Thank you for attending
this session!**